



[Go to Product page](#)

Datasheet for ABIN7262204
anti-SERPINB9 antibody

4 Images

Overview

Quantity:	200 µL
Target:	SERPINB9
Reactivity:	Human, Mouse, Rat
Host:	Rabbit
Clonality:	Polyclonal
Conjugate:	This SERPINB9 antibody is un-conjugated
Application:	Western Blotting (WB), Immunofluorescence (IF)

Product Details

Immunogen:	Recombinant fusion protein of human SERPINB9 (NP_004146.1).
Isotype:	IgG
Characteristics:	Polyclonal Antibody
Purification:	Affinity purification

Target Details

Target:	SERPINB9
Alternative Name:	SERPINB9 (SERPINB9 Products)
Background:	This gene encodes a member of the serine protease inhibitor family which are also known as serpins. The encoded protein belongs to a subfamily of intracellular serpins. This protein inhibits the activity of the effector molecule granzyme B. Overexpression of this protein may prevent cytotoxic T-lymphocytes from eliminating certain tumor cells. A pseudogene of this

Target Details

gene is found on chromosome 6.

Molecular Weight: Observed_MW: 42 kDa
Calculated_MW: 42 kDa

Gene ID: 5272

UniProt: [P50453](#)

Application Details

Application Notes: WB 1:500-1:2000 IF 1:10-1:100

Restrictions: For Research Use only

Handling

Format: Liquid

Concentration: 1 mg/mL

Buffer: PBS with 0.02 % sodium azide, 50 % glycerol, pH 7.3

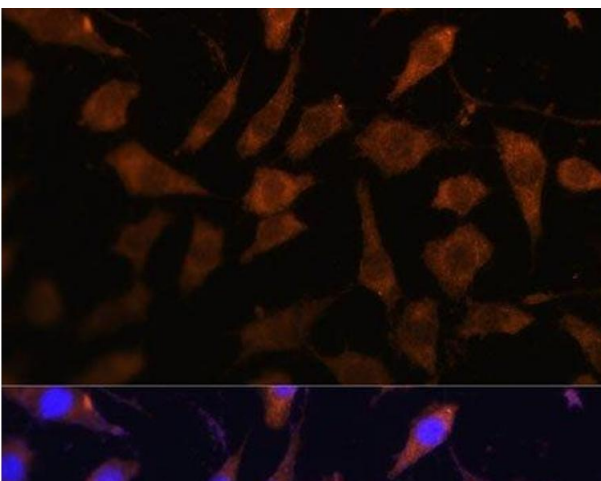
Preservative: Sodium azide

Precaution of Use: This product contains Sodium azide: a POISONOUS AND HAZARDOUS SUBSTANCE which should be handled by trained staff only.

Storage: -20 °C

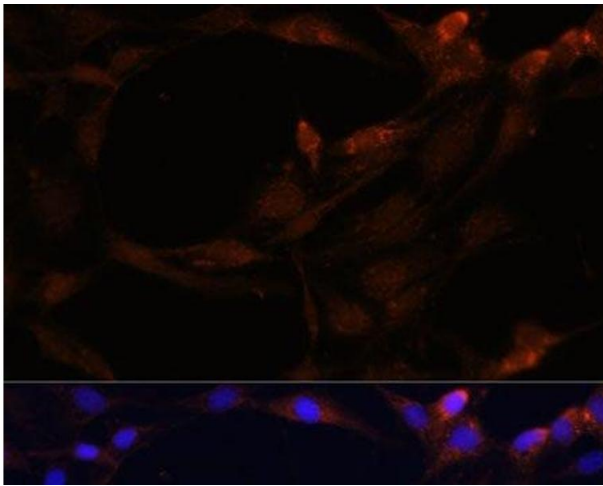
Storage Comment: Store at -20°C. Avoid freeze / thaw cycles.

Images



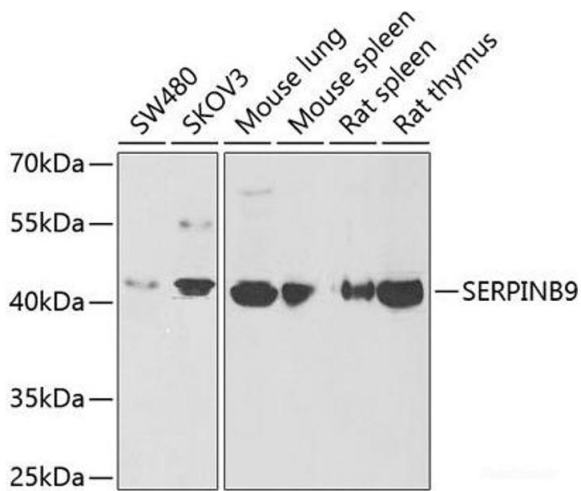
Immunofluorescence

Image 1. Immunofluorescence analysis of L929 cells using SERPINB9 Polyclonal Antibody at dilution of 1:100. Blue: DAPI for nuclear staining.



Immunofluorescence

Image 2. Immunofluorescence analysis of C6 cells using SERPINB9 Polyclonal Antibody at dilution of 1:100. Blue: DAPI for nuclear staining.



Western Blotting

Image 3. Western blot analysis of extracts of various cell lines using SERPINB9 Polyclonal Antibody at dilution of 1:1000.

Please check the [product details page](#) for more images. Overall 4 images are available for ABIN7262204.