

Datasheet for ABIN7262226

**anti-XCL1 antibody****1** Image[Go to Product page](#)

## Overview

Quantity:	200 µL
Target:	XCL1
Reactivity:	Human
Host:	Rabbit
Clonality:	Polyclonal
Conjugate:	This XCL1 antibody is un-conjugated
Application:	Immunofluorescence (IF)

## Product Details

Immunogen:	Recombinant fusion protein of human XCL1 (NP_002986.1).
Isotype:	IgG
Characteristics:	Polyclonal Antibody
Purification:	Affinity purification

## Target Details

Target:	XCL1
Alternative Name:	XCL1 ( <a href="#">XCL1 Products</a> )
Background:	This antimicrobial gene encodes a member of the chemokine superfamily. Chemokines function in inflammatory and immunological responses, inducing leukocyte migration and activation. The encoded protein is a member of the C-chemokine subfamily, retaining only two of four cysteines conserved in other chemokines, and is thought to be specifically chemotactic

## Target Details

for T cells. This gene and a closely related family member are located on the long arm of chromosome 1.

Gene ID: 6375

UniProt: [P47992](#)

Pathways: [Regulation of Leukocyte Mediated Immunity](#), [Positive Regulation of Immune Effector Process](#), [Production of Molecular Mediator of Immune Response](#), [Activated T Cell Proliferation](#)

## Application Details

Application Notes: IF 1:50-1:100

Restrictions: For Research Use only

## Handling

Format: Liquid

Concentration: 1 mg/mL

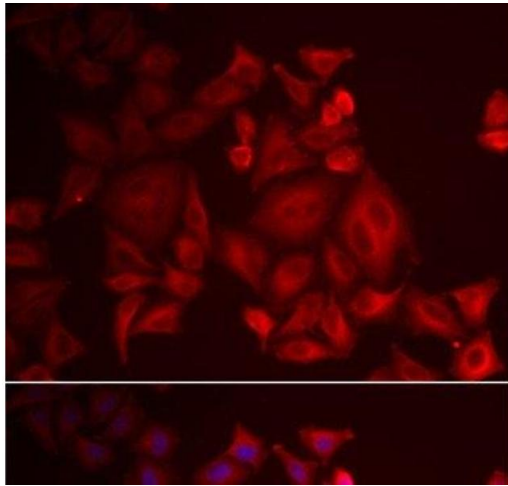
Buffer: PBS with 0.02 % sodium azide, 50 % glycerol, pH 7.3

Preservative: Sodium azide

Precaution of Use: This product contains Sodium azide: a POISONOUS AND HAZARDOUS SUBSTANCE which should be handled by trained staff only.

Storage: -20 °C

Storage Comment: Store at -20°C. Avoid freeze / thaw cycles.



#### Immunofluorescence

**Image 1.** Immunofluorescence analysis of U2OS cells using XCL1 Polyclonal Antibody