

Datasheet for ABIN7262236

anti-SSRP1 antibody**3** Images[Go to Product page](#)

Overview

Quantity:	200 µL
Target:	SSRP1
Reactivity:	Human, Mouse
Host:	Rabbit
Clonality:	Polyclonal
Conjugate:	This SSRP1 antibody is un-conjugated
Application:	Western Blotting (WB), Immunohistochemistry (IHC), Immunofluorescence (IF)

Product Details

Immunogen:	Recombinant fusion protein of human SSRP1 (NP_003137.1).
Isotype:	IgG
Characteristics:	Polyclonal Antibody
Purification:	Affinity purification

Target Details

Target:	SSRP1
Alternative Name:	SSRP1 (SSRP1 Products)
Background:	The protein encoded by this gene is a subunit of a heterodimer that, along with SUPT16H, forms chromatin transcriptional elongation factor FACT. FACT interacts specifically with histones H2A/H2B to effect nucleosome disassembly and transcription elongation. FACT and cisplatin-damaged DNA may be crucial to the anticancer mechanism of cisplatin. This encoded

Target Details

protein contains a high mobility group box which most likely constitutes the structure recognition element for cisplatin-modified DNA. This protein also functions as a co-activator of the transcriptional activator p63. An alternatively spliced transcript variant of this gene has been described, but its full-length nature is not known.

Molecular Weight: Observed_MW: 98 kDa
Calculated_MW: 81 kDa

Gene ID: 6749

UniProt: [Q08945](#)

Pathways: [Chromatin Binding](#)

Application Details

Application Notes: WB 1:500-1:2000 IHC 1:50-1:200 IF 1:10-1:100

Restrictions: For Research Use only

Handling

Format: Liquid

Concentration: 1 mg/mL

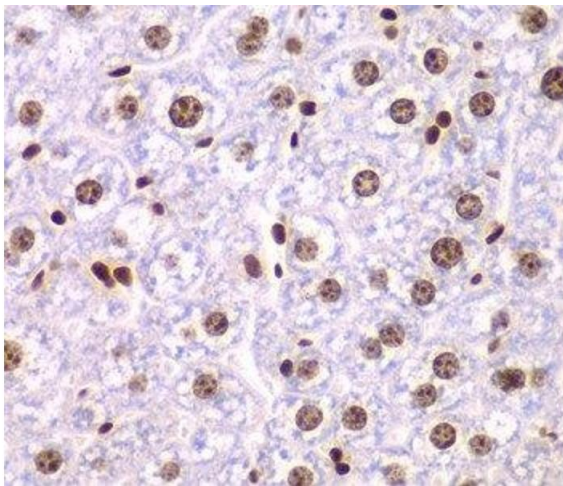
Buffer: PBS with 0.02 % sodium azide, 50 % glycerol, pH 7.3

Preservative: Sodium azide

Precaution of Use: This product contains Sodium azide: a POISONOUS AND HAZARDOUS SUBSTANCE which should be handled by trained staff only.

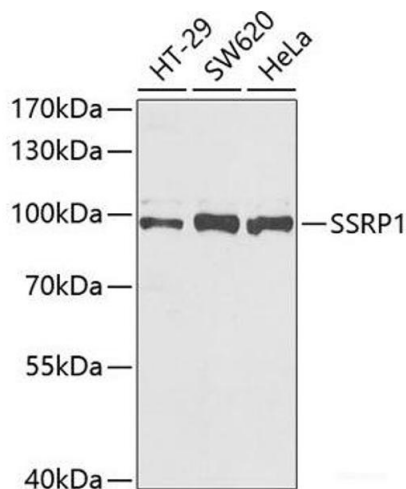
Storage: -20 °C

Storage Comment: Store at -20°C. Avoid freeze / thaw cycles.



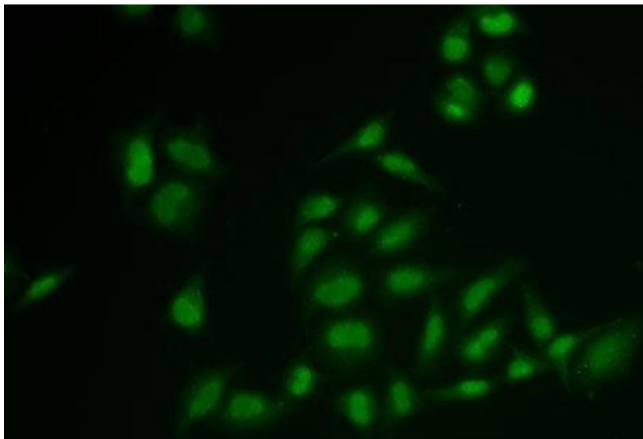
Immunohistochemistry (Paraffin-embedded Sections)

Image 1. Immunohistochemistry of paraffin-embedded Mouse liver using SSRP1 Polyclonal Antibody at dilution of 1:200 (40x lens).



Western Blotting

Image 2. Western blot analysis of extracts of various cell lines using SSRP1 Polyclonal Antibody at dilution of 1:1000.



Immunofluorescence

Image 3. Immunofluorescence analysis of U2OS cells using SSRP1 Polyclonal Antibody