

Datasheet for ABIN7262250

anti-Tpp2 antibody**2** Images[Go to Product page](#)

Overview

Quantity:	200 µL
Target:	Tpp2
Reactivity:	Human, Mouse, Rat
Host:	Rabbit
Clonality:	Polyclonal
Conjugate:	This Tpp2 antibody is un-conjugated
Application:	Western Blotting (WB), Immunofluorescence (IF)

Product Details

Immunogen:	Recombinant fusion protein of human TPP2 (NP_003282.2).
Isotype:	IgG
Characteristics:	Polyclonal Antibody
Purification:	Affinity purification

Target Details

Target:	Tpp2
Alternative Name:	TPP2 (Tpp2 Products)
Background:	This gene encodes a mammalian peptidase that, at neutral pH , removes tripeptides from the N terminus of longer peptides. The protein has a specialized function that is essential for some MHC class I antigen presentation. The protein is a high molecular mass serine exopeptidase, the amino acid sequence surrounding the serine residue at the active site is similar to the

Target Details

peptidases of the subtilisin class rather than the trypsin class.

Molecular Weight: Observed_MW: 138 kDa
Calculated_MW: 138 kDa

Gene ID: 7174

UniProt: [P29144](#)

Application Details

Application Notes: WB 1:500-1:2000 IF 1:50-1:200

Restrictions: For Research Use only

Handling

Format: Liquid

Concentration: 1 mg/mL

Buffer: PBS with 0.02 % sodium azide, 50 % glycerol, pH 7.3

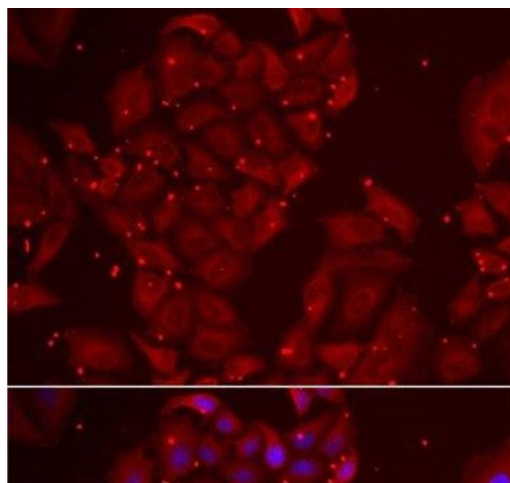
Preservative: Sodium azide

Precaution of Use: This product contains Sodium azide: a POISONOUS AND HAZARDOUS SUBSTANCE which should be handled by trained staff only.

Storage: -20 °C

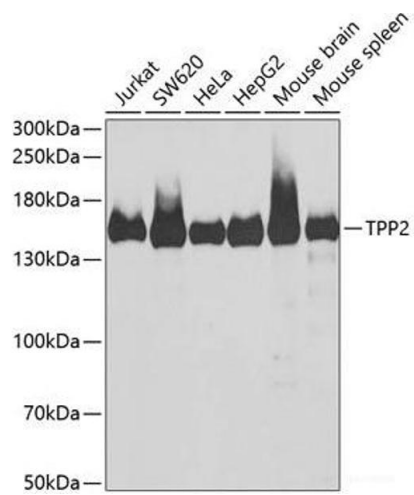
Storage Comment: Store at -20°C. Avoid freeze / thaw cycles.

Images



Immunofluorescence

Image 1. Immunofluorescence analysis of U2OS cells using TPP2 Polyclonal Antibody



Western Blotting

Image 2. Western blot analysis of extracts of various cell lines using TPP2 Polyclonal Antibody at dilution of 1:1000.