

Datasheet for ABIN7262286

anti-PAICS antibody**3** Images[Go to Product page](#)

Overview

Quantity:	200 µL
Target:	PAICS
Reactivity:	Human, Rat
Host:	Rabbit
Clonality:	Polyclonal
Conjugate:	This PAICS antibody is un-conjugated
Application:	Western Blotting (WB), Immunohistochemistry (IHC), Immunofluorescence (IF)

Product Details

Immunogen:	Recombinant fusion protein of human PAICS (NP_001072992.1).
Isotype:	IgG
Characteristics:	Polyclonal Antibody
Purification:	Affinity purification

Target Details

Target:	PAICS
Alternative Name:	PAICS (PAICS Products)
Background:	This gene encodes a bifunctional enzyme containing phosphoribosylaminoimidazole carboxylase activity in its N-terminal region and phosphoribosylaminoimidazole succinocarboxamide synthetase in its C-terminal region. It catalyzes steps 6 and 7 of purine biosynthesis. The gene is closely linked and divergently transcribed with a locus that encodes

Target Details

an enzyme in the same pathway, and transcription of the two genes is coordinately regulated. The human genome contains several pseudogenes of this gene. Multiple transcript variants encoding different isoforms have been found for this gene.

Molecular Weight: Observed_MW: 47 kDa
Calculated_MW: 47 kDa

Gene ID: 10606

UniProt: [P22234](#)

Pathways: [Chromatin Binding](#)

Application Details

Application Notes: WB 1:500-1:2000 IHC 1:50-1:200 IF 1:10-1:100

Restrictions: For Research Use only

Handling

Format: Liquid

Concentration: 1 mg/mL

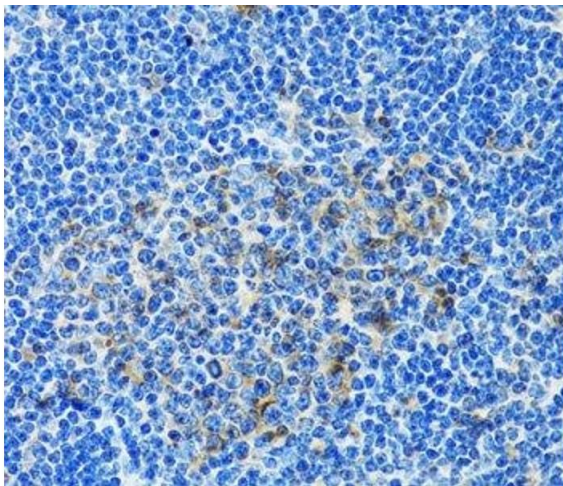
Buffer: PBS with 0.02 % sodium azide, 50 % glycerol, pH 7.3

Preservative: Sodium azide

Precaution of Use: This product contains Sodium azide: a POISONOUS AND HAZARDOUS SUBSTANCE which should be handled by trained staff only.

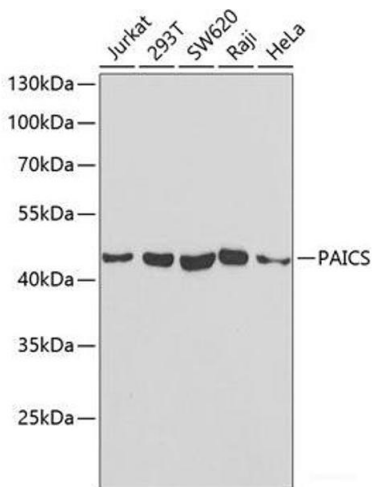
Storage: -20 °C

Storage Comment: Store at -20°C. Avoid freeze / thaw cycles.



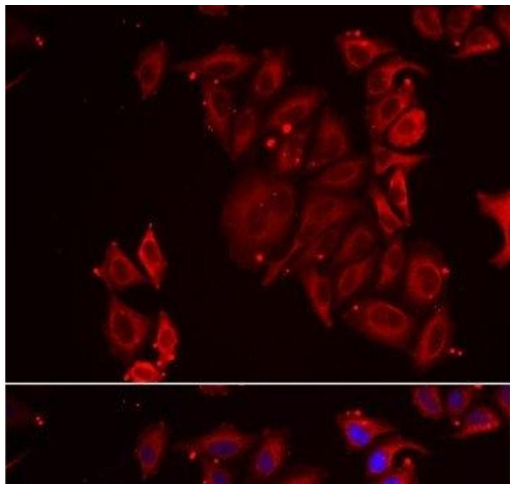
Immunohistochemistry (Paraffin-embedded Sections)

Image 1. Immunohistochemistry of paraffin-embedded Rat spleen using PAICS Polyclonal Antibody at dilution of 1:100 (40x lens).



Western Blotting

Image 2. Western blot analysis of extracts of various cell lines using PAICS Polyclonal Antibody at dilution of 1:1000.



Immunofluorescence

Image 3. Immunofluorescence analysis of U2OS cells using PAICS Polyclonal Antibody