

Datasheet for ABIN726230  
**anti-GFRA1 antibody (AA 351-429)**[2 Images](#)[1 Publication](#)[Go to Product page](#)

## Overview

|                      |   |
|----------------------|---|
| Quantity:            | 100 µL  |
| Target:              | GFRA1   |
| Binding Specificity: | AA 351-429  |
| Reactivity:          | Human, Mouse, Goat  |
| Host:                | Rabbit  |
| Clonality:           | Polyclonal  |
| Conjugate:           | This GFRA1 antibody is un-conjugated  |
| Application:         | Western Blotting (WB), ELISA, Immunohistochemistry (Paraffin-embedded Sections) (IHC (p)), Flow Cytometry (FACS), Immunofluorescence (Cultured Cells) (IF (cc)), Immunofluorescence (Paraffin-embedded Sections) (IF (p)), Immunohistochemistry (Frozen Sections) (IHC (fro)) |

## Product Details

|                       |  |
|-----------------------|--|
| Immunogen:            | KLH conjugated synthetic peptide derived from human GFR Alpha-1  |
| Isotype:              | IgG  |
| Specificity:          | This antibody exhibits a secondary cross-reactivity towards Exonuclease-1 due to a 60 % contiguous sequence similarity over the immunogen range. |
| Cross-Reactivity:     | Goat, Human, Mouse   |
| Predicted Reactivity: | Rat,Dog,Cow,Pig,Horse  |
| Purification:         | Purified by Protein A.   |

## Target Details

|                   |  |
|-------------------|--|
| Target:           | GFRA1  |
| Alternative Name: | GNFRA ( <a href="#">GFRA1 Products</a> )   |
| Background:       | <p>Synonyms: GDNFR, RET1L, RETL1, TRNR1, GDNFRA, GFR-ALPHA-1, GDNF family receptor alpha-1, GDNF receptor alpha-1, GDNFR-alpha-1, RET ligand 1, TGF-beta-related neurotrophic factor receptor 1, GFRA1</p> <p>Background: Receptor for GDNF. Mediates the GDNF-induced autophosphorylation and activation of the RET receptor (By similarity).</p> |
| Gene ID:          | 2674   |
| UniProt:          | <a href="#">P56159</a>   |

## Application Details

|                    |  |
|--------------------|--|
| Application Notes: | <p>WB 1:300-5000</p> <p>ELISA 1:500-1000</p> <p>FCM 1:20-100</p> <p>IHC-P 1:200-400</p> <p>IHC-F 1:100-500</p> <p>IF(IHC-P) 1:50-200</p> <p>IF(IHC-F) 1:50-200</p> <p>IF(ICC) 1:50-200</p> |
| Restrictions:      | For Research Use only  |

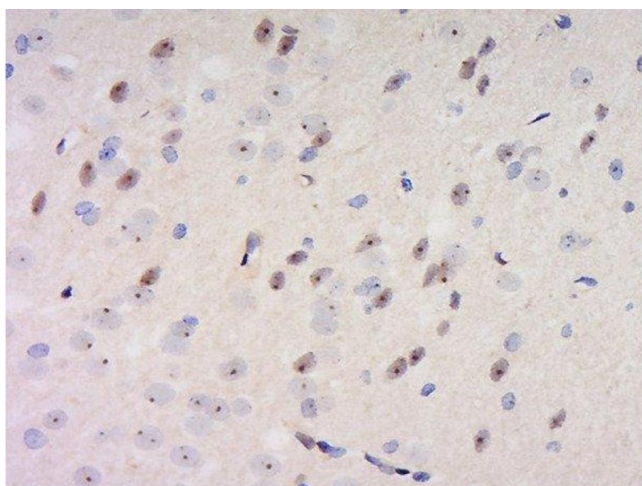
## Handling

|                    |  |
|--------------------|--|
| Format:            | Liquid   |
| Concentration:     | 1 µg/µL  |
| Buffer:            | 0.01M TBS( pH 7.4) with 1 % BSA, 0.02 % Proclin300 and 50 % Glycerol.  |
| Preservative:      | ProClin  |
| Precaution of Use: | This product contains ProClin: a POISONOUS AND HAZARDOUS SUBSTANCE, which should be handled by trained staff only. |
| Storage:           | 4 °C,-20 °C  |
| Storage Comment:   | Shipped at 4°C. Store at -20°C for one year. Avoid repeated freeze/thaw cycles.                                    |
| Expiry Date:       | 12 months  |

## Publications

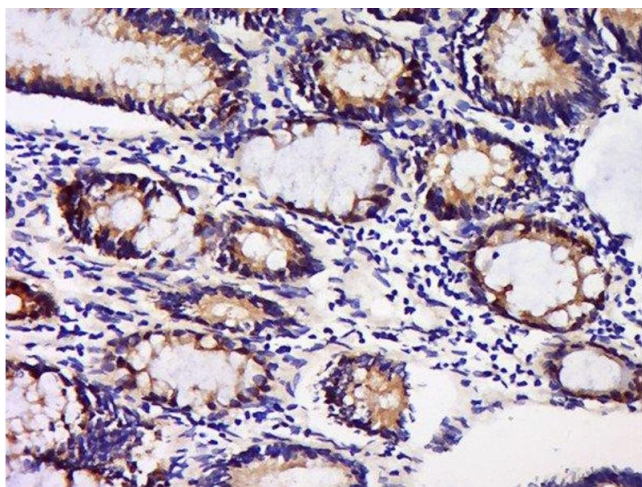
Product cited in: Ma, Zhou, Li, Zheng, Wu, Niu, Tang, He, Li, Hua: "Lin28a promotes self-renewal and proliferation of dairy goat spermatogonial stem cells (SSCs) through regulation of mTOR and PI3K/AKT." in: **Scientific reports**, Vol. 6, pp. 38805, (2016) ([PubMed](#)).

## Images



### Immunohistochemistry (Paraffin-embedded Sections)

**Image 1.** Formalin-fixed and paraffin embedded rat brain labeled with Anti-GDNFRA Polyclonal Antibody, Unconjugated at 1:200 followed by conjugation to the secondary antibody and DAB staining.



### Immunohistochemistry (Paraffin-embedded Sections)

**Image 2.** Formalin-fixed and paraffin embedded human colon carcinoma labeled with Anti-GDNFRA Polyclonal Antibody, Unconjugated at 1:200 followed by conjugation to the secondary antibody and DAB staining.