



Datasheet for ABIN7262342 anti-RFFL antibody



[Go to Product page](#)

1 Image

Overview

Quantity:	200 µL
Target:	RFFL
Reactivity:	Human, Mouse, Rat
Host:	Rabbit
Clonality:	Polyclonal
Conjugate:	This RFFL antibody is un-conjugated
Application:	Western Blotting (WB)

Product Details

Immunogen:	Recombinant fusion protein of human RFFL (NP_001017368.1).
Isotype:	IgG
Characteristics:	Polyclonal Antibody
Purification:	Affinity purification

Target Details

Target:	RFFL
Alternative Name:	RFFL (RFFL Products)
Background:	RFFL (Ring Finger And FYVE Like Domain Containing E3 Ubiquitin Protein Ligase) is a Protein Coding gene. Diseases associated with RFFL include Noonan Syndrome 1. Among its related pathways are Gene Expression and Regulation of TP53 Expression and Degradation. Gene Ontology (GO) annotations related to this gene include protein kinase binding and ubiquitin

Target Details

protein ligase binding. An important paralog of this gene is ENSG00000267618.

Molecular Weight: Observed_MW: 50 kDa
Calculated_MW: 36 kDa/39 kDa/40 kDa

Gene ID: 117584

UniProt: [Q8WZ73](#)

Application Details

Application Notes: WB 1:500-1:2000

Restrictions: For Research Use only

Handling

Format: Liquid

Concentration: 1 mg/mL

Buffer: PBS with 0.02 % sodium azide, 50 % glycerol, pH 7.3

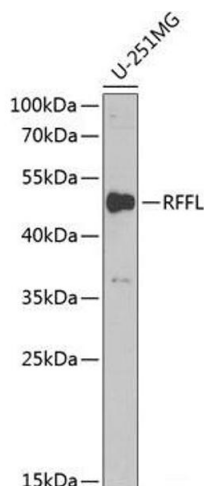
Preservative: Sodium azide

Precaution of Use: This product contains Sodium azide: a POISONOUS AND HAZARDOUS SUBSTANCE which should be handled by trained staff only.

Storage: -20 °C

Storage Comment: Store at -20°C. Avoid freeze / thaw cycles.

Images



Western Blotting

Image 1. Western blot analysis of extracts of U-251MG cells using RFFL Polyclonal Antibody at dilution of 1:1000.