



[Go to Product page](#)

Datasheet for ABIN7262417

## anti-Centromere Protein C Pseudogene 1 (CENPCP1) antibody

### 2 Images

#### Overview

Quantity:	200 µL
Target:	Centromere Protein C Pseudogene 1 (CENPCP1)
Reactivity:	Human, Mouse, Rat
Host:	Rabbit
Clonality:	Polyclonal
Conjugate:	Un-conjugated
Application:	Immunohistochemistry (IHC)

#### Product Details

Immunogen:	Recombinant fusion protein of human CENPC (NP_001803.2).
Isotype:	IgG
Characteristics:	Polyclonal Antibody
Purification:	Affinity purification

#### Target Details

Target:	Centromere Protein C Pseudogene 1 (CENPCP1)
Alternative Name:	CENPC ( <a href="#">CENPCP1 Products</a> )
Background:	Centromere protein C 1 is a centromere autoantigen and a component of the inner kinetochore plate. The protein is required for maintaining proper kinetochore size and a timely transition to anaphase. A putative pseudogene exists on chromosome 12.

## Target Details

Gene ID: 1060

UniProt: [Q03188](#)

## Application Details

Application Notes: IHC 1:50-1:200

Restrictions: For Research Use only

## Handling

Format: Liquid

Concentration: 1 mg/mL

Buffer: PBS with 0.02 % sodium azide, 50 % glycerol, pH 7.3

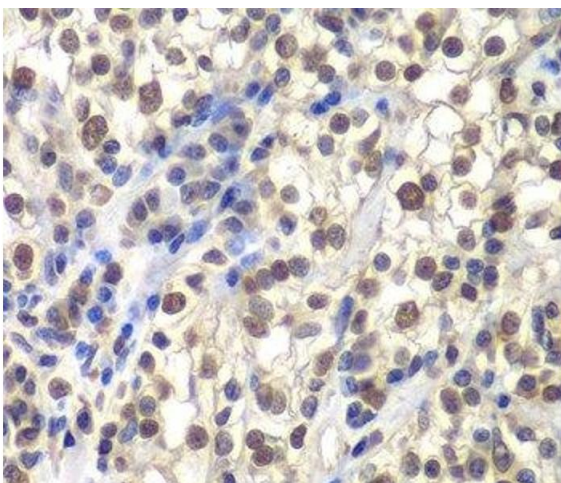
Preservative: Sodium azide

Precaution of Use: This product contains Sodium azide: a POISONOUS AND HAZARDOUS SUBSTANCE which should be handled by trained staff only.

Storage: -20 °C

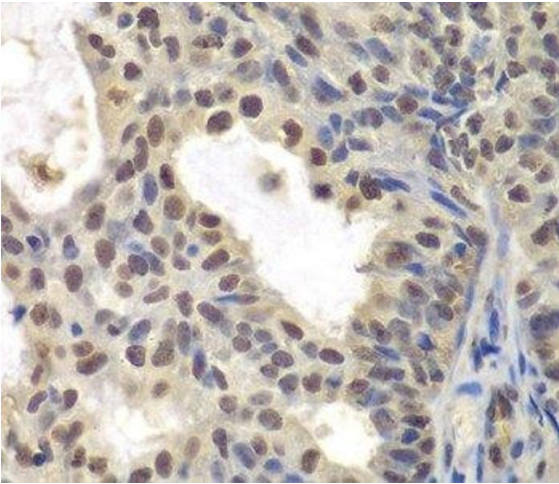
Storage Comment: Store at -20°C. Avoid freeze / thaw cycles.

## Images



### Immunohistochemistry (Paraffin-embedded Sections)

**Image 1.** Immunohistochemistry of paraffin-embedded Human kidney cancer using CENPC Polyclonal Antibody at dilution of 1:200 (40x lens).



### Immunohistochemistry (Paraffin-embedded Sections)

**Image 2.** Immunohistochemistry of paraffin-embedded Human oophoroma using CENPC Polyclonal Antibody at dilution of 1:200 (40x lens).