



Datasheet for ABIN7262427

anti-CPM antibody



[Go to Product page](#)

4 Images

Overview

Quantity:	200 µL
Target:	CPM
Reactivity:	Human
Host:	Rabbit
Clonality:	Polyclonal
Conjugate:	This CPM antibody is un-conjugated
Application:	Western Blotting (WB), Immunohistochemistry (IHC)

Product Details

Immunogen:	Recombinant fusion protein of human CPM (NP_001005502.1).
Isotype:	IgG
Characteristics:	Polyclonal Antibody
Purification:	Affinity purification

Target Details

Target:	CPM
Alternative Name:	CPM (CPM Products)
Background:	The protein encoded by this gene is a membrane-bound arginine/lysine carboxypeptidase. Its expression is associated with monocyte to macrophage differentiation. This encoded protein contains hydrophobic regions at the amino and carboxy termini and has 6 potential asparagine-linked glycosylation sites. The active site residues of carboxypeptidases A and B are conserved

Target Details

in this protein. Three alternatively spliced transcript variants encoding the same protein have been described for this gene.

Molecular Weight: Observed_MW: 62 kDa
Calculated_MW: 50 kDa

Gene ID: 1368

UniProt: [P14384](#)

Application Details

Application Notes: WB 1:500-1:2000 IHC 1:50-1:100

Restrictions: For Research Use only

Handling

Format: Liquid

Concentration: 1 mg/mL

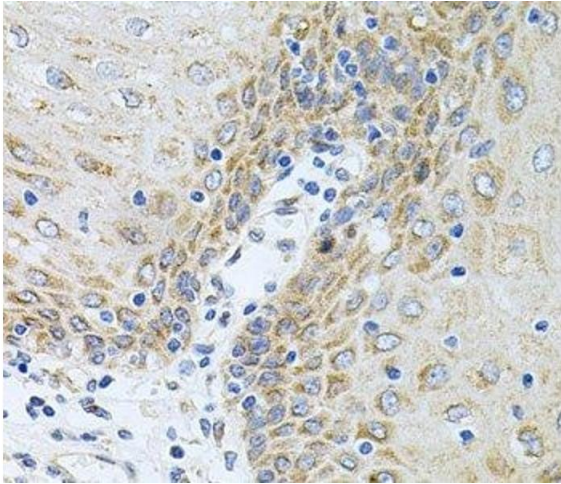
Buffer: PBS with 0.02 % sodium azide, 50 % glycerol, pH 7.3

Preservative: Sodium azide

Precaution of Use: This product contains Sodium azide: a POISONOUS AND HAZARDOUS SUBSTANCE which should be handled by trained staff only.

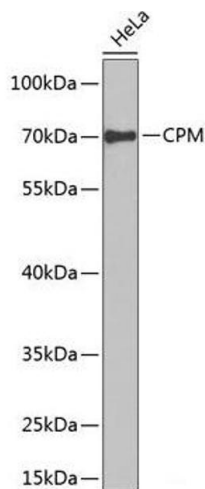
Storage: -20 °C

Storage Comment: Store at -20°C. Avoid freeze / thaw cycles.



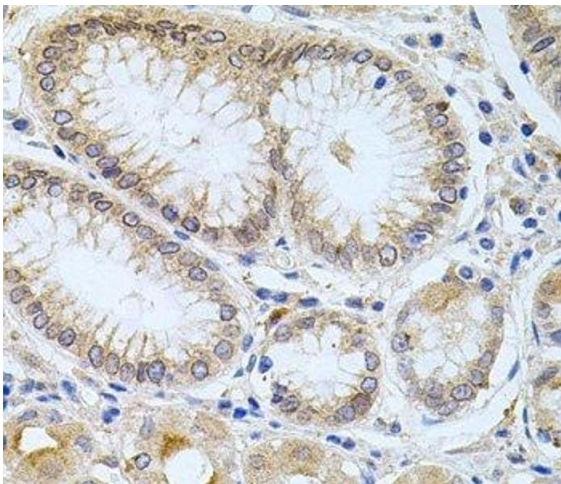
Immunohistochemistry (Paraffin-embedded Sections)

Image 1. Immunohistochemistry of paraffin-embedded Human esophagus using CPM Polyclonal Antibody at dilution of 1:100 (40x lens).



Western Blotting

Image 2. Western blot analysis of extracts of HeLa cells using CPM Polyclonal Antibody at dilution of 1:1000.



Immunohistochemistry (Paraffin-embedded Sections)

Image 3. Immunohistochemistry of paraffin-embedded Human stomach using CPM Polyclonal Antibody at dilution of 1:100 (40x lens).

Please check the [product details page](#) for more images. Overall 4 images are available for ABIN7262427.