

Datasheet for ABIN7262501

anti-HYAL1 antibody

4 Images

[Go to Product page](#)

Overview

| | |
|--------------|---|
| Quantity: | 200 µL |
| Target: | HYAL1 |
| Reactivity: | Human, Mouse, Rat |
| Host: | Rabbit |
| Clonality: | Polyclonal |
| Conjugate: | This HYAL1 antibody is un-conjugated |
| Application: | Western Blotting (WB), Immunohistochemistry (IHC) |

Product Details

| | |
|------------------|--|
| Immunogen: | Recombinant fusion protein of human HYAL1 (NP_149349.2). |
| Isotype: | IgG |
| Characteristics: | Polyclonal Antibody |
| Purification: | Affinity purification |

Target Details

| | |
|-------------------|---|
| Target: | HYAL1 |
| Alternative Name: | HYAL1 (HYAL1 Products) |
| Background: | This gene encodes a lysosomal hyaluronidase. Hyaluronidases intracellularly degrade hyaluronan, one of the major glycosaminoglycans of the extracellular matrix. Hyaluronan is thought to be involved in cell proliferation, migration and differentiation. This enzyme is active at an acidic pH and is the major hyaluronidase in plasma. Mutations in this gene are associated |

Target Details

with mucopolysaccharidosis type IX, or hyaluronidase deficiency. The gene is one of several related genes in a region of chromosome 3p21.3 associated with tumor suppression. Multiple transcript variants encoding different isoforms have been found for this gene.

Molecular Weight: Observed_MW: 48 kDa
Calculated_MW: 10 kDa/19 kDa/23 kDa/27 kDa/37 kDa/45 kDa/48 kDa

Gene ID: 3373

UniProt: [Q12794](#)

Pathways: [Glycosaminoglycan Metabolic Process](#)

Application Details

Application Notes: WB 1:500-1:2000 IHC 1:50-1:200

Restrictions: For Research Use only

Handling

Format: Liquid

Concentration: 1 mg/mL

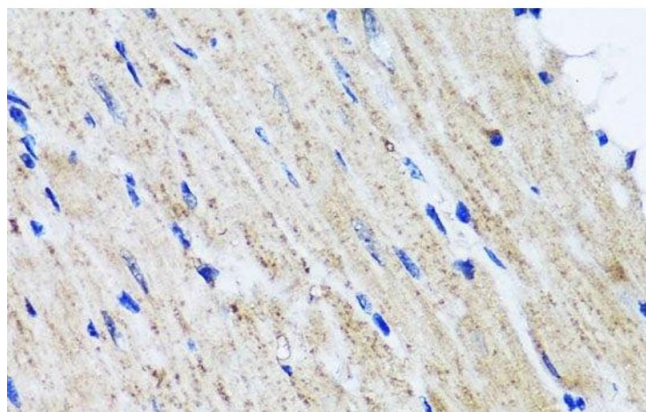
Buffer: PBS with 0.02 % sodium azide, 50 % glycerol, pH 7.3

Preservative: Sodium azide

Precaution of Use: This product contains Sodium azide: a POISONOUS AND HAZARDOUS SUBSTANCE which should be handled by trained staff only.

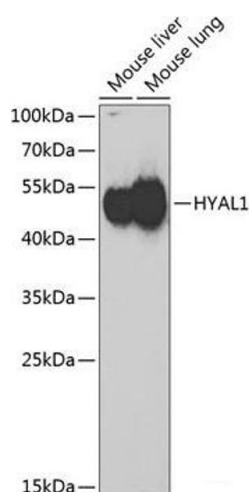
Storage: -20 °C

Storage Comment: Store at -20°C. Avoid freeze / thaw cycles.



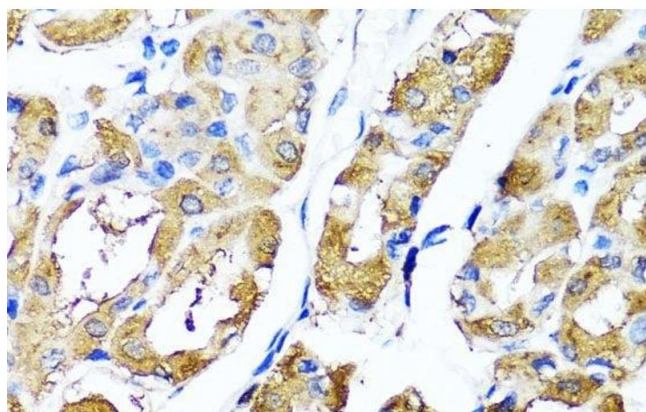
Immunohistochemistry (Paraffin-embedded Sections)

Image 1. Immunohistochemistry of paraffin-embedded Mouse heart using HYAL1 Polyclonal Antibody at dilution of 1:100 (40x lens).



Western Blotting

Image 2. Western blot analysis of extracts of various cell lines using HYAL1 Polyclonal Antibody at dilution of 1:1000.



Immunohistochemistry (Paraffin-embedded Sections)

Image 3. Immunohistochemistry of paraffin-embedded Human stomach using HYAL1 Polyclonal Antibody at dilution of 1:100 (40x lens).

Please check the [product details page](#) for more images. Overall 4 images are available for ABIN7262501.