

Datasheet for ABIN7262507

**anti-IL13 Receptor alpha 1 antibody**[Go to Product page](#)**1** Image

## Overview

Quantity:	200 µL
Target:	IL13 Receptor alpha 1 (IL13RA1)
Reactivity:	Human, Mouse
Host:	Rabbit
Clonality:	Polyclonal
Conjugate:	This IL13 Receptor alpha 1 antibody is un-conjugated
Application:	Western Blotting (WB)

## Product Details

Immunogen:	Recombinant fusion protein of human IL13RA1 (NP_001551.1).
Isotype:	IgG
Characteristics:	Polyclonal Antibody
Purification:	Affinity purification

## Target Details

Target:	IL13 Receptor alpha 1 (IL13RA1)
Alternative Name:	IL13RA1 ( <a href="#">IL13RA1 Products</a> )
Background:	The protein encoded by this gene is a subunit of the interleukin 13 receptor. This subunit forms a receptor complex with IL4 receptor alpha, a subunit shared by IL13 and IL4 receptors. This subunit serves as a primary IL13-binding subunit of the IL13 receptor, and may also be a component of IL4 receptors. This protein has been shown to bind tyrosine kinase TYK2, and

## Target Details

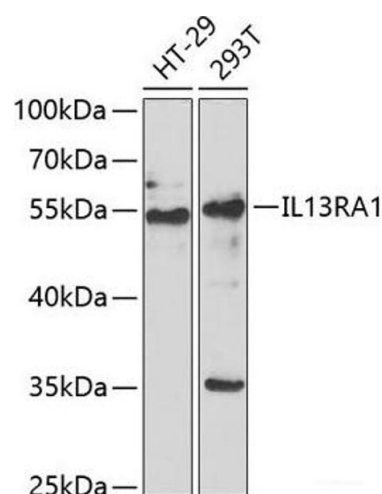
	thus may mediate the signaling processes that lead to the activation of JAK1, STAT3 and STAT6 induced by IL13 and IL4.
Molecular Weight:	Observed_MW: 53 kDa Calculated_MW: 31 kDa/48 kDa
Gene ID:	3597
UniProt:	<a href="#">P78552</a>
Pathways:	<a href="#">JAK-STAT Signaling</a> , <a href="#">Positive Regulation of Immune Effector Process</a> , <a href="#">Production of Molecular Mediator of Immune Response</a>

## Application Details

Application Notes:	WB 1:500-1:2000
Restrictions:	For Research Use only

## Handling

Format:	Liquid
Concentration:	1 mg/mL
Buffer:	PBS with 0.02 % sodium azide, 50 % glycerol, pH 7.3
Preservative:	Sodium azide
Precaution of Use:	This product contains Sodium azide: a POISONOUS AND HAZARDOUS SUBSTANCE which should be handled by trained staff only.
Storage:	-20 °C
Storage Comment:	Store at -20°C. Avoid freeze / thaw cycles.



Western Blotting

**Image 1.** Western blot analysis of extracts of various cell lines using IL13RA1 Polyclonal Antibody at dilution of 1:1000.