



Datasheet for ABIN7262523

anti-KLF4 antibody

3 Images



[Go to Product page](#)

Overview

Quantity:	200 µL
Target:	KLF4
Reactivity:	Human, Mouse, Rat
Host:	Rabbit
Clonality:	Polyclonal
Conjugate:	This KLF4 antibody is un-conjugated
Application:	Western Blotting (WB), Immunofluorescence (IF), Immunohistochemistry (IHC)

Product Details

Immunogen:	Recombinant fusion protein of human KLF4 (NP_004226.3).
Isotype:	IgG
Characteristics:	Polyclonal Antibody
Purification:	Affinity purification

Target Details

Target:	KLF4
Alternative Name:	KLF4 (KLF4 Products)
Background:	<p>This gene encodes a protein that belongs to the Kruppel family of transcription factors. The encoded zinc finger protein is required for normal development of the barrier function of skin.</p> <p>The encoded protein is thought to control the G1-to-S transition of the cell cycle following DNA damage by mediating the tumor suppressor gene p53. Mice lacking this gene have a normal</p>

Target Details

appearance but lose weight rapidly, and die shortly after birth due to fluid evaporation resulting from compromised epidermal barrier function. Alternative splicing results in multiple transcript variants encoding different isoforms.

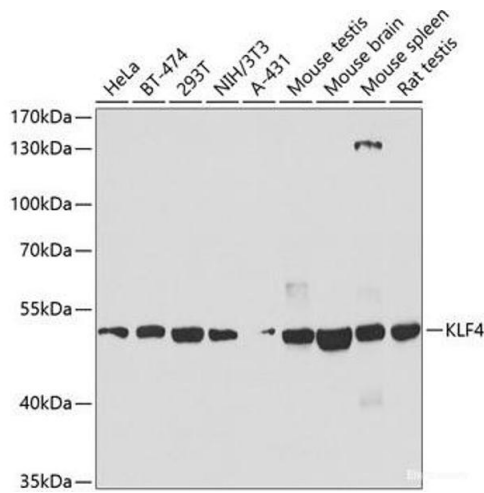
Molecular Weight:	Observed_MW: 50 kDa Calculated_MW: 6 kDa/12 kDa/45 kDa/51 kDa/54 kDa
Gene ID:	9314
UniProt:	O43474
Pathways:	Peptide Hormone Metabolism , Stem Cell Maintenance

Application Details

Application Notes:	WB 1:500-1:2000 IHC 1:50-1:200 IF 1:50-1:200
Restrictions:	For Research Use only

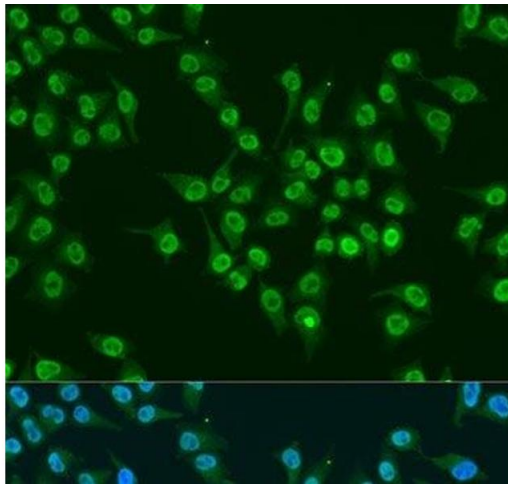
Handling

Format:	Liquid
Concentration:	1 mg/mL
Buffer:	PBS with 0.02 % sodium azide, 50 % glycerol, pH 7.3
Preservative:	Sodium azide
Precaution of Use:	This product contains Sodium azide: a POISONOUS AND HAZARDOUS SUBSTANCE which should be handled by trained staff only.
Storage:	-20 °C
Storage Comment:	Store at -20°C. Avoid freeze / thaw cycles.



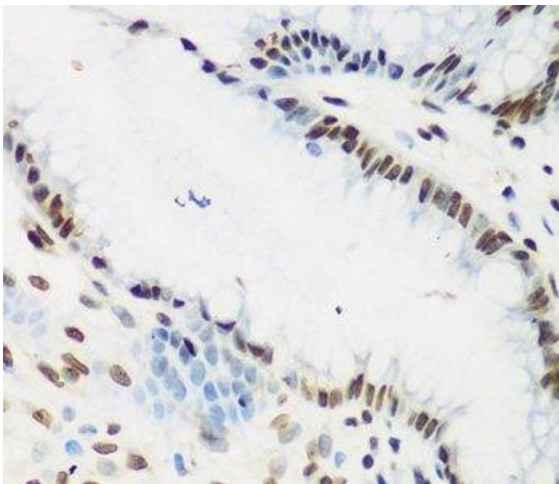
Western Blotting

Image 1. Western blot analysis of extracts of various cell lines using KLF4 Polyclonal Antibody at dilution of 1:1000.



Immunofluorescence

Image 2. Immunofluorescence analysis of U2OS cells using KLF4 Polyclonal Antibody at dilution of 1:100. Blue: DAPI for nuclear staining.



Immunohistochemistry (Paraffin-embedded Sections)

Image 3. Immunohistochemistry of paraffin-embedded Human stomach cancer using KLF4 Polyclonal Antibody at dilution of 1:200 (40x lens).