

Datasheet for ABIN7262561

**anti-NPHP1 antibody****2** Images[Go to Product page](#)

## Overview

Quantity:	200 µL
Target:	NPHP1
Reactivity:	Human, Mouse, Rat
Host:	Rabbit
Clonality:	Polyclonal
Conjugate:	This NPHP1 antibody is un-conjugated
Application:	Western Blotting (WB), Immunofluorescence (IF)

## Product Details

Immunogen:	Recombinant fusion protein of human NPHP1 (NP_001121651.1).
Isotype:	IgG
Characteristics:	Polyclonal Antibody
Purification:	Affinity purification

## Target Details

Target:	NPHP1
Alternative Name:	NPHP1 ( <a href="#">NPHP1 Products</a> )
Background:	This gene encodes a protein with src homology domain 3 (SH3) patterns. This protein interacts with Crk-associated substrate, and it appears to function in the control of cell division, as well as in cell-cell and cell-matrix adhesion signaling, likely as part of a multifunctional complex localized in actin- and microtubule-based structures. Mutations in this gene cause familial

## Target Details

juvenile nephronophthisis type 1, a kidney disorder involving both tubules and glomeruli. Defects in this gene are also associated with Senior-Loken syndrome type 1, also referred to as juvenile nephronophthisis with Leber amaurosis, which is characterized by kidney and eye disease, and with Joubert syndrome type 4, which is characterized by cerebellar ataxia, oculomotor apraxia, psychomotor delay and neonatal breathing abnormalities, sometimes including retinal dystrophy and renal disease. Multiple transcript variants encoding different isoforms have been found for this gene.

Molecular Weight:	Observed_MW: 83 kDa Calculated_MW: 69 kDa/77 kDa/83 kDa
-------------------	--

Gene ID:	4867
----------	------

UniProt:	<a href="#">O15259</a>
----------	------------------------

## Application Details

Application Notes:	WB 1:500-1:2000 IF 1:50-1:100
--------------------	-------------------------------

Restrictions:	For Research Use only
---------------	-----------------------

## Handling

Format:	Liquid
---------	--------

Concentration:	1 mg/mL
----------------	---------

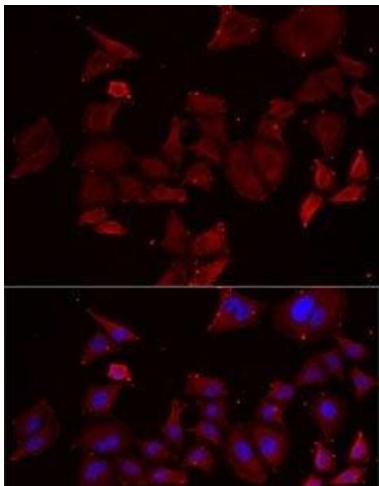
Buffer:	PBS with 0.02 % sodium azide, 50 % glycerol, pH 7.3
---------	---

Preservative:	Sodium azide
---------------	--------------

Precaution of Use:	This product contains Sodium azide: a POISONOUS AND HAZARDOUS SUBSTANCE which should be handled by trained staff only.
--------------------	--

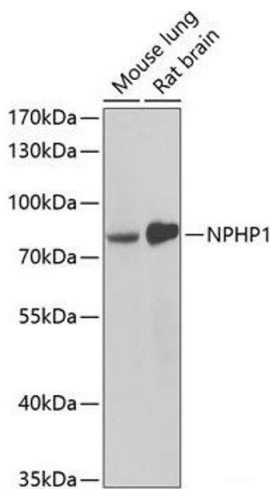
Storage:	-20 °C
----------	--------

Storage Comment:	Store at -20°C. Avoid freeze / thaw cycles.
------------------	---



Immunofluorescence

**Image 1.** Immunofluorescence analysis of MCF7 cells using NPHP1 Polyclonal Antibody



Western Blotting

**Image 2.** Western blot analysis of extracts of various cell lines using NPHP1 Polyclonal Antibody at dilution of 1:1000.