

Datasheet for ABIN7262563

anti-NR2C1 antibody**2** Images[Go to Product page](#)

Overview

Quantity:	200 µL
Target:	NR2C1
Reactivity:	Human, Mouse
Host:	Rabbit
Clonality:	Polyclonal
Conjugate:	This NR2C1 antibody is un-conjugated
Application:	Western Blotting (WB), Immunofluorescence (IF)

Product Details

Immunogen:	Recombinant fusion protein of human NR2C1 (NP_003288.2).
Isotype:	IgG
Characteristics:	Polyclonal Antibody
Purification:	Affinity purification

Target Details

Target:	NR2C1
Alternative Name:	NR2C1 (NR2C1 Products)
Background:	This gene encodes a nuclear hormone receptor characterized by a highly conserved DNA binding domain (DBD), a variable hinge region, and a carboxy-terminal ligand binding domain (LBD) that is typical for all members of the steroid/thyroid hormone receptor superfamily. This protein also belongs to a large family of ligand-inducible transcription factors that regulate gene

Target Details

expression by binding to specific DNA sequences within promoters of target genes. Multiple alternatively spliced transcript variants have been described, but the full-length nature of some of these variants has not been determined.

Molecular Weight: Observed_MW: 75 kDa
Calculated_MW: 51 kDa/53 kDa/67 kDa

Gene ID: 7181

UniProt: [P13056](#)

Pathways: [Nuclear Receptor Transcription Pathway](#), [Retinoic Acid Receptor Signaling Pathway](#), [Steroid Hormone Mediated Signaling Pathway](#)

Application Details

Application Notes: WB 1:500-1:2000 IF 1:50-1:200

Restrictions: For Research Use only

Handling

Format: Liquid

Concentration: 1 mg/mL

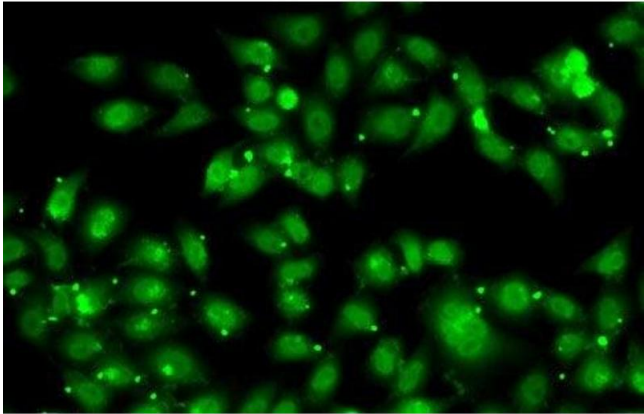
Buffer: PBS with 0.02 % sodium azide, 50 % glycerol, pH 7.3

Preservative: Sodium azide

Precaution of Use: This product contains Sodium azide: a POISONOUS AND HAZARDOUS SUBSTANCE which should be handled by trained staff only.

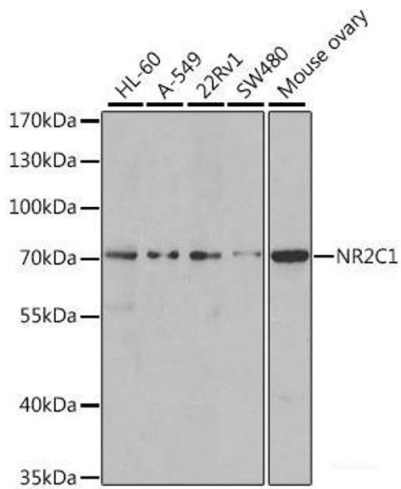
Storage: -20 °C

Storage Comment: Store at -20°C. Avoid freeze / thaw cycles.



Immunofluorescence

Image 1. Immunofluorescence analysis of MCF7 cells using NR2C1 Polyclonal Antibody



Western Blotting

Image 2. Western blot analysis of extracts of various cell lines using NR2C1 Polyclonal Antibody at dilution of 1:1000.