



## Datasheet for ABIN7262577 anti-PDLIM1 antibody



[Go to Product page](#)

### 2 Images

#### Overview

Quantity:	200 µL
Target:	PDLIM1
Reactivity:	Human, Mouse, Rat
Host:	Rabbit
Clonality:	Polyclonal
Conjugate:	This PDLIM1 antibody is un-conjugated
Application:	Western Blotting (WB), Immunofluorescence (IF)

#### Product Details

Immunogen:	Recombinant fusion protein of human PDLIM1 (NP_066272.1).
Isotype:	IgG
Characteristics:	Polyclonal Antibody
Purification:	Affinity purification

#### Target Details

Target:	PDLIM1
Alternative Name:	PDLIM1 ( <a href="#">PDLIM1 Products</a> )
Background:	This gene encodes a member of the enigma protein family. The protein contains two protein interacting domains, a PDZ domain at the amino terminal end and one to three LIM domains at the carboxyl terminal. It is a cytoplasmic protein associated with the cytoskeleton. The protein may function as an adapter to bring other LIM-interacting proteins to the cytoskeleton.

## Target Details

Pseudogenes associated with this gene are located on chromosomes 3, 14 and 17.

Molecular Weight: Observed\_MW: 36 kDa  
Calculated\_MW: 36 kDa

Gene ID: 9124

UniProt: [O00151](#)

## Application Details

Application Notes: WB 1:500-1:2000 IF 1:10-1:100

Restrictions: For Research Use only

## Handling

Format: Liquid

Concentration: 1 mg/mL

Buffer: PBS with 0.02 % sodium azide, 50 % glycerol, pH 7.3

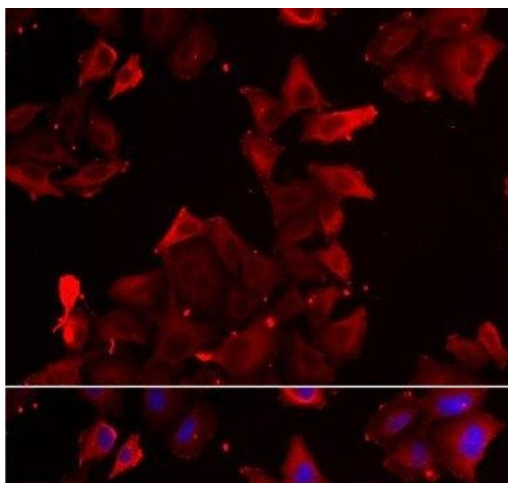
Preservative: Sodium azide

Precaution of Use: This product contains Sodium azide: a POISONOUS AND HAZARDOUS SUBSTANCE which should be handled by trained staff only.

Storage: -20 °C

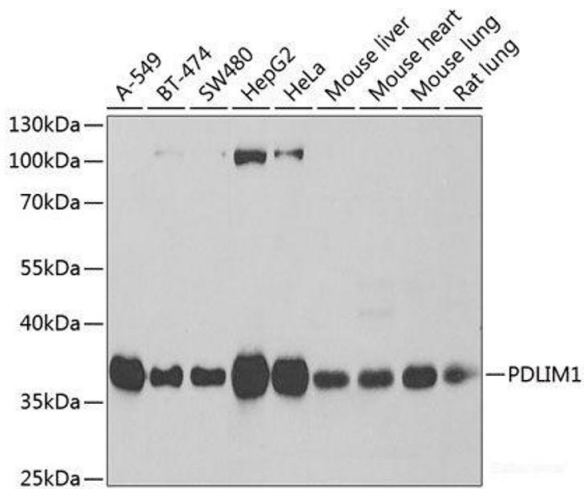
Storage Comment: Store at -20°C. Avoid freeze / thaw cycles.

## Images



### Immunofluorescence

**Image 1.** Immunofluorescence analysis of U2OS cells using PDLIM1 Polyclonal Antibody



### Western Blotting

**Image 2.** Western blot analysis of extracts of various cell lines using PDLIM1 Polyclonal Antibody at dilution of 1:1000.