

Datasheet for ABIN7262595  
**anti-PPP2R1B antibody**

## 3 Images

[Go to Product page](#)

## Overview

Quantity:	200 µL
Target:	PPP2R1B
Reactivity:	Human, Mouse, Rat
Host:	Rabbit
Clonality:	Polyclonal
Conjugate:	This PPP2R1B antibody is un-conjugated
Application:	Western Blotting (WB), Immunohistochemistry (IHC), Immunofluorescence (IF)

## Product Details

Immunogen:	Recombinant fusion protein of human PPP2R1B (NP_859050.1).
Isotype:	IgG
Characteristics:	Polyclonal Antibody
Purification:	Affinity purification

## Target Details

Target:	PPP2R1B
Alternative Name:	PPP2R1B ( <a href="#">PPP2R1B Products</a> )
Background:	This gene encodes a constant regulatory subunit of protein phosphatase 2. Protein phosphatase 2 is one of the four major Ser/Thr phosphatases, and it is implicated in the negative control of cell growth and division. It consists of a common heteromeric core enzyme, which is composed of a catalytic subunit and a constant regulatory subunit, that associates

## Target Details

with a variety of regulatory subunits. The constant regulatory subunit A serves as a scaffolding molecule to coordinate the assembly of the catalytic subunit and a variable regulatory B subunit. This gene encodes a beta isoform of the constant regulatory subunit A. Mutations in this gene have been associated with some lung and colon cancers. Alternatively spliced transcript variants have been described.

Molecular Weight: Observed\_MW: 65 kDa  
Calculated\_MW: 52 kDa/61 kDa/66 kDa/73 kDa

Gene ID: 5519

UniProt: [P30154](#)

Pathways: [PI3K-Akt Signaling](#), [Mitotic G1-G1/S Phases](#), [Hepatitis C](#), [Toll-Like Receptors Cascades](#)

## Application Details

Application Notes: WB 1:500-1:2000 IHC 1:50-1:200 IF 1:50-1:100

Restrictions: For Research Use only

## Handling

Format: Liquid

Concentration: 1 mg/mL

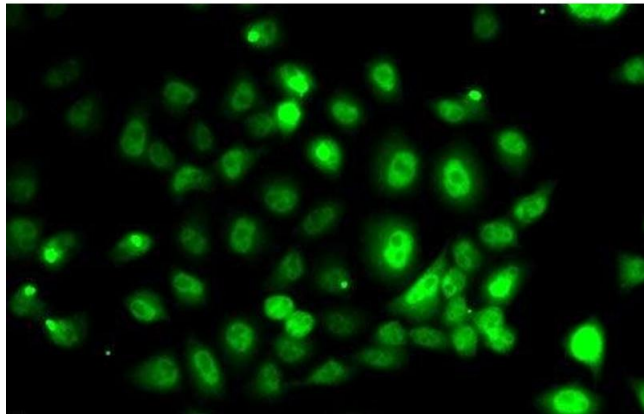
Buffer: PBS with 0.02 % sodium azide, 50 % glycerol, pH 7.3

Preservative: Sodium azide

Precaution of Use: This product contains Sodium azide: a POISONOUS AND HAZARDOUS SUBSTANCE which should be handled by trained staff only.

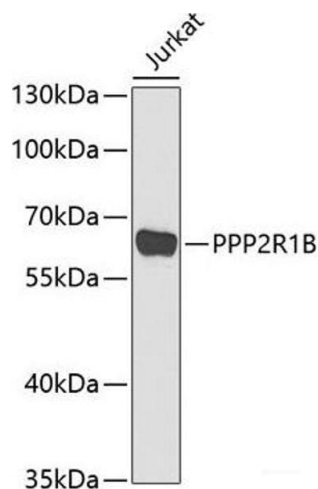
Storage: -20 °C

Storage Comment: Store at -20°C. Avoid freeze / thaw cycles.



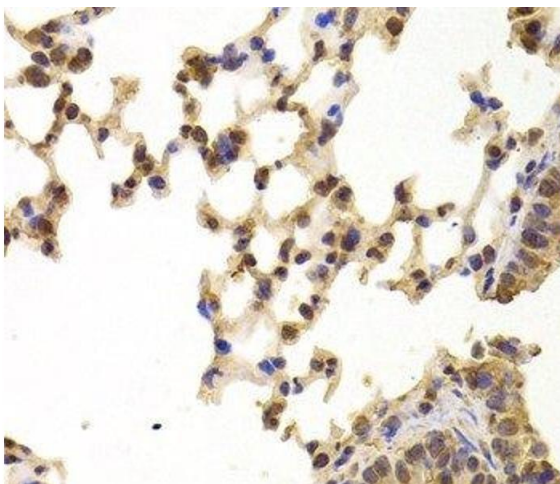
#### Immunofluorescence

**Image 1.** Immunofluorescence analysis of MCF7 cells using PPP2R1B Polyclonal Antibody



#### Western Blotting

**Image 2.** Western blot analysis of extracts of Jurkat cells using PPP2R1B Polyclonal Antibody at dilution of 1:1000.



#### Immunohistochemistry (Paraffin-embedded Sections)

**Image 3.** Immunohistochemistry of paraffin-embedded Mouse lung using PPP2R1B Polyclonal Antibody at dilution of 1:100 (40x lens).