

Datasheet for ABIN7262597

**anti-PROK2 antibody****1** Image[Go to Product page](#)

## Overview

Quantity:	200 µL
Target:	PROK2
Reactivity:	Human, Rat, Mouse
Host:	Rabbit
Clonality:	Polyclonal
Conjugate:	This PROK2 antibody is un-conjugated
Application:	Immunohistochemistry (IHC)

## Product Details

Immunogen:	Recombinant fusion protein of human PROK2 (NP_001119600.1).
Isotype:	IgG
Characteristics:	Polyclonal Antibody
Purification:	Affinity purification

## Target Details

Target:	PROK2
Alternative Name:	PROK2 ( <a href="#">PROK2 Products</a> )
Background:	This gene encodes a protein expressed in the suprachiasmatic nucleus (SCN) circadian clock that may function as the output component of the circadian clock. The secreted form of the encoded protein may also serve as a chemoattractant for neuronal precursor cells in the olfactory bulb. Proteins from other vertebrates which are similar to this gene product were

## Target Details

isolated based on homology to snake venom and secretions from frog skin, and have been shown to have diverse functions. Mutations in this gene are associated with Kallmann syndrome 4. Multiple transcript variants encoding different isoforms have been found for this gene.

Gene ID: 60675

UniProt: [Q9HC23](#)

## Application Details

Application Notes: IHC 1:50-1:100

Restrictions: For Research Use only

## Handling

Format: Liquid

Concentration: 1 mg/mL

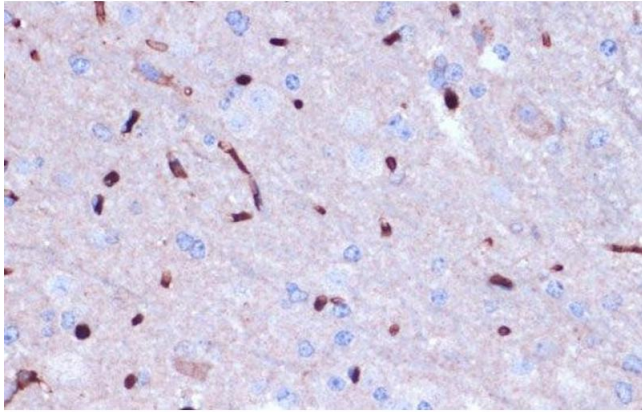
Buffer: PBS with 0.02 % sodium azide, 50 % glycerol, pH 7.3

Preservative: Sodium azide

Precaution of Use: This product contains Sodium azide: a POISONOUS AND HAZARDOUS SUBSTANCE which should be handled by trained staff only.

Storage: -20 °C

Storage Comment: Store at -20°C. Avoid freeze / thaw cycles.



#### Immunohistochemistry (Paraffin-embedded Sections)

**Image 1.** Immunohistochemistry of paraffin-embedded Mouse brain using PROK2 Polyclonal Antibody at dilution of 1:100 (40x lens).