



Datasheet for ABIN7262621 **anti-RGS7 antibody**



[Go to Product page](#)

1 Image

Overview

Quantity:	200 µL
Target:	RGS7
Reactivity:	Human, Mouse, Rat
Host:	Rabbit
Clonality:	Polyclonal
Conjugate:	This RGS7 antibody is un-conjugated
Application:	Western Blotting (WB)

Product Details

Immunogen:	Recombinant fusion protein of human RGS7 (NP_002915.3).
Isotype:	IgG
Characteristics:	Polyclonal Antibody
Purification:	Affinity purification

Target Details

Target:	RGS7
Alternative Name:	RGS7 (RGS7 Products)
Background:	RGS7 (Regulator Of G Protein Signaling 7) is a Protein Coding gene. Diseases associated with RGS7 include Prolonged Electroretinal Response Suppression and Congenital Stationary Night Blindness. Among its related pathways are Signaling by GPCR and Myometrial Relaxation and Contraction Pathways. Gene Ontology (GO) annotations related to this gene include obsolete

Target Details

signal transducer activity and G-protein beta-subunit binding. An important paralog of this gene is RGS6.

Molecular Weight: Observed_MW: 58 kDa
Calculated_MW: 49 kDa/54 kDa/55 kDa/56 kDa/57 kDa

Gene ID: 6000

UniProt: [P49802](#)

Pathways: [Myometrial Relaxation and Contraction, Regulation of G-Protein Coupled Receptor Protein Signaling](#)

Application Details

Application Notes: WB 1:500-1:2000

Restrictions: For Research Use only

Handling

Format: Liquid

Concentration: 1 mg/mL

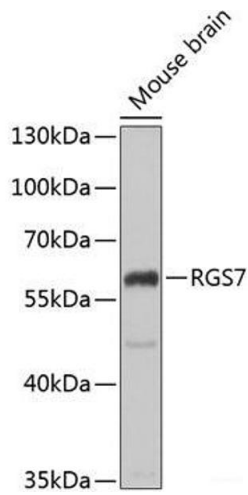
Buffer: PBS with 0.02 % sodium azide, 50 % glycerol, pH 7.3

Preservative: Sodium azide

Precaution of Use: This product contains Sodium azide: a POISONOUS AND HAZARDOUS SUBSTANCE which should be handled by trained staff only.

Storage: -20 °C

Storage Comment: Store at -20°C. Avoid freeze / thaw cycles.



Western Blotting

Image 1. Western blot analysis of extracts of Mouse brain using RGS7 Polyclonal Antibody at dilution of 1:1000.