

Datasheet for ABIN7262649

anti-MSRB1 antibody[Go to Product page](#)**1** Image

Overview

Quantity:	200 µL
Target:	MSRB1 (SEPX1)
Reactivity:	Human, Mouse, Rat
Host:	Rabbit
Clonality:	Polyclonal
Conjugate:	This MSRB1 antibody is un-conjugated
Application:	Immunofluorescence (IF)

Product Details

Immunogen:	Recombinant fusion protein of human MSRB1 (NP_057416.1).
Isotype:	IgG
Characteristics:	Polyclonal Antibody
Purification:	Affinity purification

Target Details

Target:	MSRB1 (SEPX1)
Alternative Name:	MSRB1 (SEPX1 Products)
Background:	This gene encodes a selenoprotein, which contains a selenocysteine (Sec) residue at its active site. The selenocysteine is encoded by the UGA codon that normally signals translation termination. The 3' UTR of selenoprotein genes have a common stem-loop structure, the sec insertion sequence (SECIS), that is necessary for the recognition of UGA as a Sec codon rather

Target Details

than as a stop signal. This protein belongs to the methionine sulfoxide reductase (Msr) protein family which includes repair enzymes that reduce oxidized methionine residues in proteins. The protein encoded by this gene is expressed in a variety of adult and fetal tissues and localizes to the cell nucleus and cytosol.

Gene ID: 51734

UniProt: [Q9NZV6](#)

Application Details

Application Notes: IF 1:50-1:100

Restrictions: For Research Use only

Handling

Format: Liquid

Concentration: 1 mg/mL

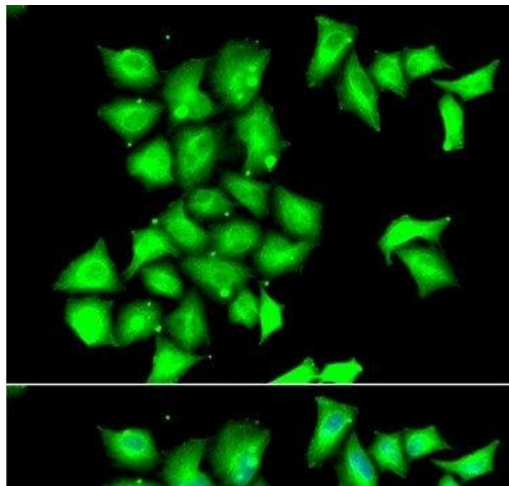
Buffer: PBS with 0.02 % sodium azide, 50 % glycerol, pH 7.3

Preservative: Sodium azide

Precaution of Use: This product contains Sodium azide: a POISONOUS AND HAZARDOUS SUBSTANCE which should be handled by trained staff only.

Storage: -20 °C

Storage Comment: Store at -20°C. Avoid freeze / thaw cycles.



Immunofluorescence

Image 1. Immunofluorescence analysis of HeLa cells using MSRB1 Polyclonal Antibody