



[Go to Product page](#)

Datasheet for ABIN7262663
anti-Smoothelin antibody

1 Image

Overview

Quantity:	200 µL
Target:	Smoothelin (SMTN)
Reactivity:	Human, Mouse, Rat
Host:	Rabbit
Clonality:	Polyclonal
Conjugate:	This Smoothelin antibody is un-conjugated
Application:	Western Blotting (WB)

Product Details

Immunogen:	Recombinant fusion protein of human SMTN (NP_001193946.1).
Isotype:	IgG
Characteristics:	Polyclonal Antibody
Purification:	Affinity purification

Target Details

Target:	Smoothelin (SMTN)
Alternative Name:	SMTN (SMTN Products)
Background:	This gene encodes a structural protein that is found exclusively in contractile smooth muscle cells. It associates with stress fibers and constitutes part of the cytoskeleton. This gene is localized to chromosome 22q12.3, distal to the TUPLE1 locus and outside the DiGeorge syndrome deletion. Alternative splicing of this gene results in multiple transcript variants

Target Details

encoding distinct isoforms.

Molecular Weight: Observed_MW: 117 kDa
Calculated_MW: 50 kDa/98 kDa/99 kDa/101 kDa

Gene ID: 6525

UniProt: [P53814](#)

Application Details

Application Notes: WB 1:500-1:2000

Restrictions: For Research Use only

Handling

Format: Liquid

Concentration: 1 mg/mL

Buffer: PBS with 0.02 % sodium azide, 50 % glycerol, pH 7.3

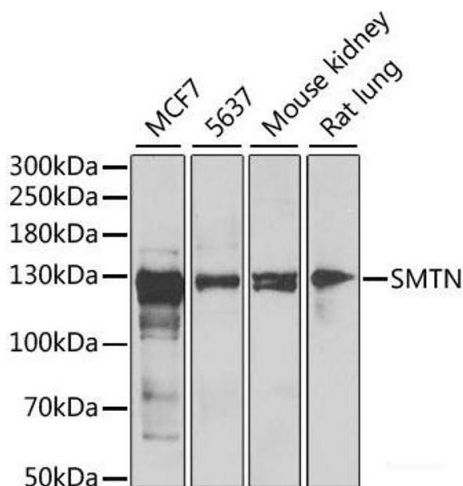
Preservative: Sodium azide

Precaution of Use: This product contains Sodium azide: a POISONOUS AND HAZARDOUS SUBSTANCE which should be handled by trained staff only.

Storage: -20 °C

Storage Comment: Store at -20°C. Avoid freeze / thaw cycles.

Images



Western Blotting

Image 1. Western blot analysis of extracts of various cell lines using SMTN Polyclonal Antibody at dilution of 1:1000.