

Datasheet for ABIN7262709  
**anti-TRAPPC10 antibody**



[Go to Product page](#)

2 Images

Overview

Quantity:	200 µL
Target:	TRAPPC10 (TMEM1)
Reactivity:	Human, Mouse, Rat
Host:	Rabbit
Clonality:	Polyclonal
Conjugate:	This TRAPPC10 antibody is un-conjugated
Application:	Western Blotting (WB), Immunofluorescence (IF)

Product Details

Immunogen:	Recombinant fusion protein of human TRAPPC10 (NP_003265.3).
Isotype:	IgG
Characteristics:	Polyclonal Antibody
Purification:	Affinity purification

Target Details

Target:	TRAPPC10 (TMEM1)
Alternative Name:	TRAPPC10 ( <a href="#">TMEM1 Products</a> )
Background:	The protein encoded by this gene is a transmembrane protein found in the cis-Golgi complex. The encoded protein is part of the multisubunit transport protein particle (TRAPP) complex and may be involved in vesicular transport from the endoplasmic reticulum to the Golgi. Mutations in this gene could be responsible for the Unverricht-Lundborg type of progressive myoclonus

## Target Details

epilepsy, or for autoimmune polyglandular disease type 1.

Molecular Weight: Observed\_MW: 112 kDa  
Calculated\_MW: 32 kDa/142 kDa

Gene ID: 7109

UniProt: [P48553](#)

## Application Details

Application Notes: WB 1:500-1:2000 IF 1:50-1:100

Restrictions: For Research Use only

## Handling

Format: Liquid

Concentration: 1 mg/mL

Buffer: PBS with 0.02 % sodium azide, 50 % glycerol, pH 7.3

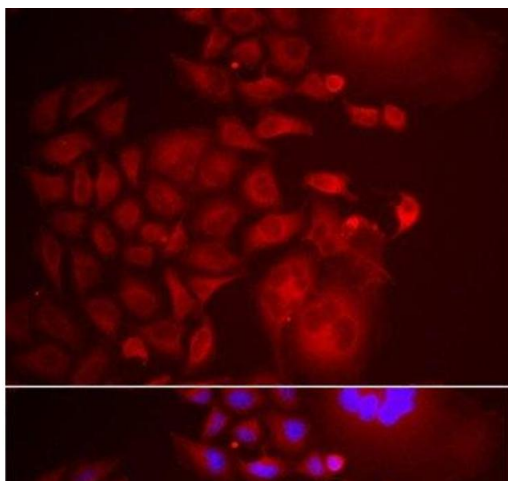
Preservative: Sodium azide

Precaution of Use: This product contains Sodium azide: a POISONOUS AND HAZARDOUS SUBSTANCE which should be handled by trained staff only.

Storage: -20 °C

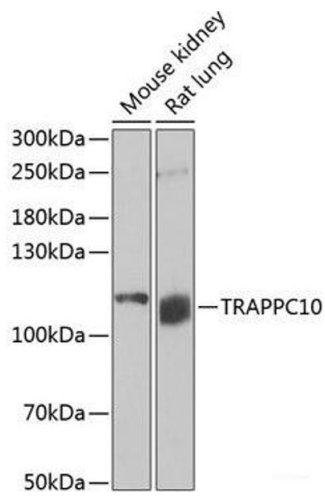
Storage Comment: Store at -20°C. Avoid freeze / thaw cycles.

## Images



### Immunofluorescence

**Image 1.** Immunofluorescence analysis of U2OS cells using TRAPPC10 Polyclonal Antibody



### Western Blotting

**Image 2.** Western blot analysis of extracts of various cell lines using TRAPPC10 Polyclonal Antibody at dilution of 1:1000.