

Datasheet for ABIN726275  
**anti-GHRH antibody (AA 32-59)**

## 2 Images

[Go to Product page](#)

## Overview

Quantity:	100 µL
Target:	GHRH
Binding Specificity:	AA 32-59
Reactivity:	Mouse, Rat
Host:	Rabbit
Clonality:	Polyclonal
Conjugate:	This GHRH antibody is un-conjugated
Application:	Western Blotting (WB), ELISA, Immunofluorescence (Cultured Cells) (IF (cc)), Immunofluorescence (Paraffin-embedded Sections) (IF (p)), Immunohistochemistry (Paraffin-embedded Sections) (IHC (p)), Immunohistochemistry (Frozen Sections) (IHC (fro))

## Product Details

Immunogen:	KLH conjugated synthetic peptide derived from human GHRF
Isotype:	IgG
Cross-Reactivity:	Mouse, Rat
Predicted Reactivity:	Human,Cow,Pig
Purification:	Purified by Protein A.

## Target Details

Target:	GHRH
---------	------

## Target Details

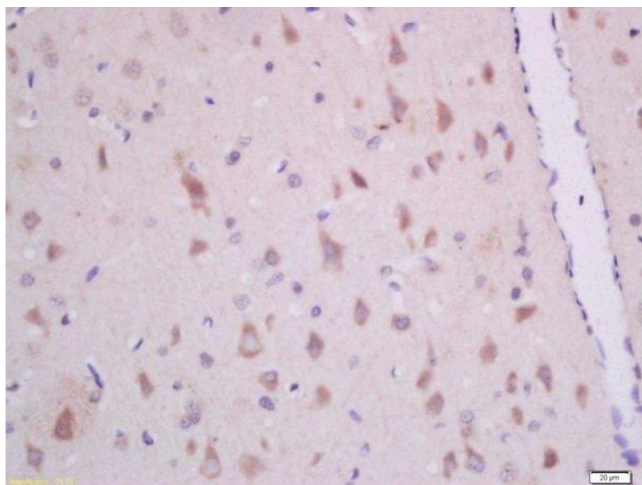
Alternative Name:	GHRH ( <a href="#">GHRH Products</a> )
Background:	<p>Synonyms: GRF, GHRF, GHRH, Somatoliberin precursor, Somatocrinin, Sermorelin, SLIB_HUMAN.</p> <p>Background: GHRF encoded by this gene belongs to the glucagon family and is a preproprotein that is produced in the hypothalamus. The preproprotein is cleaved to form a 44 aa factor, also called somatocrinin, that acts to stimulate growth hormone release from the pituitary. Variant receptors for somatocrinin have been found in several types of tumors, and antagonists of these receptors can inhibit the growth of the tumors. Defects in this gene are a cause of dwarfism, while hypersecretion of the encoded protein is a cause of gigantism.</p>
Gene ID:	2691
Pathways:	<a href="#">Hormone Transport</a> , <a href="#">Hormone Activity</a> , <a href="#">cAMP Metabolic Process</a>

## Application Details

Application Notes:	WB 1:300-5000 ELISA 1:500-1000 IHC-P 1:200-400 IHC-F 1:100-500 IF(IHC-P) 1:50-200 IF(IHC-F) 1:50-200 IF(ICC) 1:50-200
Restrictions:	For Research Use only

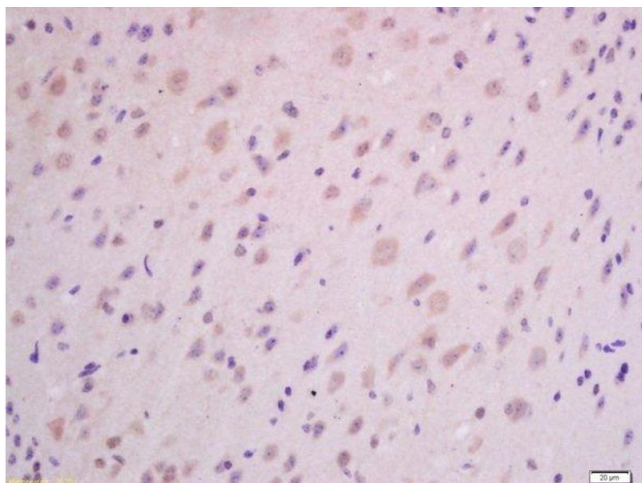
## Handling

Format:	Liquid
Concentration:	1 µg/µL
Buffer:	0.01M TBS( pH 7.4) with 1 % BSA, 0.02 % Proclin300 and 50 % Glycerol.
Preservative:	ProClin
Precaution of Use:	This product contains ProClin: a POISONOUS AND HAZARDOUS SUBSTANCE, which should be handled by trained staff only.
Storage:	4 °C,-20 °C
Storage Comment:	Shipped at 4°C. Store at -20°C for one year. Avoid repeated freeze/thaw cycles.



#### Immunohistochemistry (Paraffin-embedded Sections)

**Image 1.** Formalin-fixed and paraffin embedded rat brain labeled with Anti-GHRH Polyclonal Antibody (ABIN726275) at 1:300 followed by conjugation to the secondary antibody and DAB staining.



#### Immunohistochemistry (Paraffin-embedded Sections)

**Image 2.** Formalin-fixed and paraffin embedded mouse brain labeled with Anti-GHRH Polyclonal Antibody, Unconjugated (ABIN726275) at 1:300 followed by conjugation to the secondary antibody and DAB staining.