

Datasheet for ABIN7262771

**anti-ATOX1 antibody**[Go to Product page](#)**1** Image

## Overview

Quantity:	200 µL
Target:	ATOX1
Reactivity:	Human
Host:	Rabbit
Clonality:	Polyclonal
Conjugate:	This ATOX1 antibody is un-conjugated
Application:	Immunofluorescence (IF)

## Product Details

Immunogen:	Recombinant fusion protein of human ATOX1 (NP_004036.1).
Isotype:	IgG
Characteristics:	Polyclonal Antibody
Purification:	Affinity purification

## Target Details

Target:	ATOX1
Alternative Name:	ATOX1 ( <a href="#">ATOX1 Products</a> )
Background:	This gene encodes a copper chaperone that plays a role in copper homeostasis by binding and transporting cytosolic copper to ATPase proteins in the trans-Golgi network for later incorporation to the ceruloplasmin. This protein also functions as an antioxidant against superoxide and hydrogen peroxide, and therefore, may play a significant role in cancer

## Target Details

carcinogenesis. Because of its cytogenetic location, this gene represents a candidate gene for 5q-syndrome.

Gene ID: 475

UniProt: [O00244](#)

Pathways: [Transition Metal Ion Homeostasis](#)

## Application Details

Application Notes: IF 1:50-1:100

Restrictions: For Research Use only

## Handling

Format: Liquid

Concentration: 1 mg/mL

Buffer: PBS with 0.02 % sodium azide, 50 % glycerol, pH 7.3

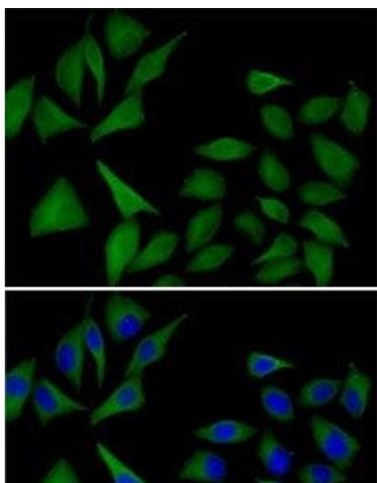
Preservative: Sodium azide

Precaution of Use: This product contains Sodium azide: a POISONOUS AND HAZARDOUS SUBSTANCE which should be handled by trained staff only.

Storage: -20 °C

Storage Comment: Store at -20°C. Avoid freeze / thaw cycles.

## Images



### Immunofluorescence

**Image 1.** Immunofluorescence analysis of MCF7 cells using ATOX1 Polyclonal Antibody