

Datasheet for ABIN7262791

anti-DACH1 antibody**1** Image[Go to Product page](#)

Overview

Quantity:	200 µL
Target:	DACH1
Reactivity:	Mouse, Rat
Host:	Rabbit
Clonality:	Polyclonal
Conjugate:	This DACH1 antibody is un-conjugated
Application:	Western Blotting (WB)

Product Details

Immunogen:	Recombinant fusion protein of human DACH1 (NP_542937.2).
Isotype:	IgG
Characteristics:	Polyclonal Antibody
Purification:	Affinity purification

Target Details

Target:	DACH1
Alternative Name:	DACH1 (DACH1 Products)
Background:	This gene encodes a chromatin-associated protein that associates with other DNA-binding transcription factors to regulate gene expression and cell fate determination during development. The protein contains a Ski domain that is highly conserved from Drosophila to human. Expression of this gene is lost in some forms of metastatic cancer, and is correlated

Target Details

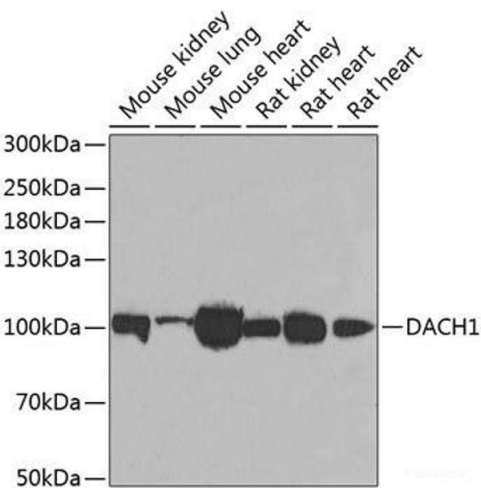
	with poor prognosis. Multiple transcript variants encoding different isoforms have been found for this gene.
Molecular Weight:	Observed_MW: 90 kDa Calculated_MW: 52 kDa/57 kDa/73 kDa/78 kDa
Gene ID:	1602
UniProt:	Q9UI36
Pathways:	Feeding Behaviour

Application Details

Application Notes:	WB 1:500-1:2000
Restrictions:	For Research Use only

Handling

Format:	Liquid
Concentration:	1 mg/mL
Buffer:	PBS with 0.02 % sodium azide, 50 % glycerol, pH 7.3
Preservative:	Sodium azide
Precaution of Use:	This product contains Sodium azide: a POISONOUS AND HAZARDOUS SUBSTANCE which should be handled by trained staff only.
Storage:	-20 °C
Storage Comment:	Store at -20°C. Avoid freeze / thaw cycles.



Western Blotting

Image 1. Western blot analysis of extracts of various cell lines using DACH1 Polyclonal Antibody at dilution of 1:1000.