

Datasheet for ABIN7262891  
**anti-Relaxin 2 antibody**[Go to Product page](#)

## 2 Images

## Overview

Quantity:	200 µL
Target:	Relaxin 2 (RLN2)
Reactivity:	Human, Rat
Host:	Rabbit
Clonality:	Polyclonal
Conjugate:	This Relaxin 2 antibody is un-conjugated
Application:	Western Blotting (WB), Immunohistochemistry (IHC)

## Product Details

Immunogen:	Recombinant fusion protein of human RLN2 (NP_604390.1).
Isotype:	IgG
Characteristics:	Polyclonal Antibody
Purification:	Affinity purification

## Target Details

Target:	Relaxin 2 (RLN2)
Alternative Name:	RLN2 ( <a href="#">RLN2 Products</a> )
Background:	This gene encodes a member of the relaxin subfamily and insulin superfamily of peptide hormones. In humans there are three non-allelic relaxin genes. This gene encodes multiple protein isoforms, at least one of which undergoes proteolytic processing. This processing generates relaxin A and B chains that are linked by disulfide bonds to form the mature peptide

## Target Details

hormone. This hormone plays a role in the male and female reproductive systems and was initially noted for its role in pregnancy. This protein also plays broader roles in the cardiovascular system, including in the regulation of blood pressure and control of heart rate, and data from animal models shows that this protein may have anti-fibrotic and cardioprotective effects.

Molecular Weight: Observed\_MW: 21 kDa  
Calculated\_MW: 12 kDa/21 kDa

Gene ID: 6019

UniProt: [P04090](#)

Pathways: [Hormone Activity](#)

## Application Details

Application Notes: WB 1:500-1:2000 IHC 1:50-1:200

Restrictions: For Research Use only

## Handling

Format: Liquid

Concentration: 1 mg/mL

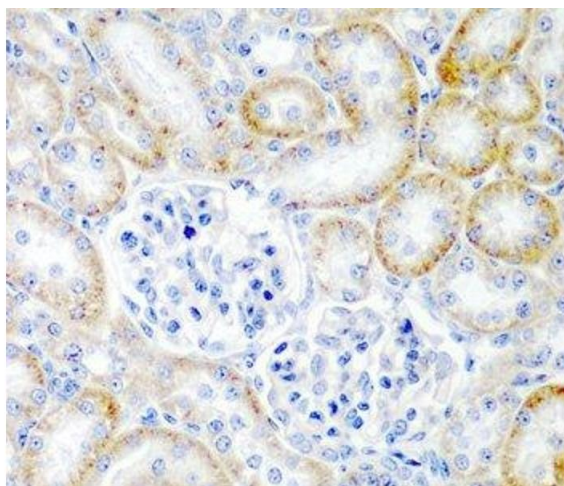
Buffer: PBS with 0.02 % sodium azide, 50 % glycerol, pH 7.3

Preservative: Sodium azide

Precaution of Use: This product contains Sodium azide: a POISONOUS AND HAZARDOUS SUBSTANCE which should be handled by trained staff only.

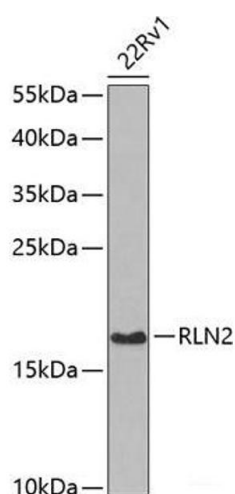
Storage: -20 °C

Storage Comment: Store at -20°C. Avoid freeze / thaw cycles.



#### Immunohistochemistry (Paraffin-embedded Sections)

**Image 1.** Immunohistochemistry of paraffin-embedded Rat kidney using RLN2 Polyclonal Antibody at dilution of 1:200 (40x lens).



#### Western Blotting

**Image 2.** Western blot analysis of extracts of 22Rv1 cells using RLN2 Polyclonal Antibody at dilution of 1:1000.