

Datasheet for ABIN7262937

**anti-UBE2V2 antibody****2** Images[Go to Product page](#)

## Overview

Quantity:	200 µL
Target:	UBE2V2
Reactivity:	Human, Mouse, Rat
Host:	Rabbit
Clonality:	Polyclonal
Conjugate:	This UBE2V2 antibody is un-conjugated
Application:	Western Blotting (WB), Immunohistochemistry (IHC)

## Product Details

Immunogen:	Recombinant fusion protein of human UBE2V2 (NP_003341.1).
Isotype:	IgG
Characteristics:	Polyclonal Antibody
Purification:	Affinity purification

## Target Details

Target:	UBE2V2
Alternative Name:	UBE2V2 ( <a href="#">UBE2V2 Products</a> )
Background:	Ubiquitin-conjugating enzyme E2 variant proteins constitute a distinct subfamily within the E2 protein family. They have sequence similarity to other ubiquitin-conjugating enzymes but lack the conserved cysteine residue that is critical for the catalytic activity of E2s. The protein encoded by this gene also shares homology with ubiquitin-conjugating enzyme E2 variant 1 and

## Target Details

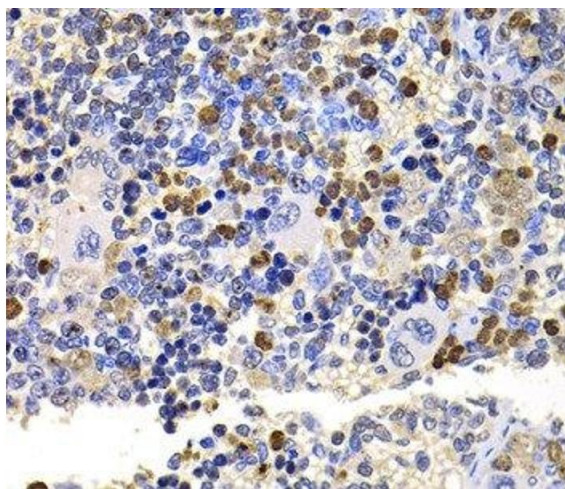
	yeast MMS2 gene product. It may be involved in the differentiation of monocytes and enterocytes.
Molecular Weight:	Observed_MW: 16 kDa Calculated_MW: 16 kDa
Gene ID:	7336
UniProt:	<a href="#">Q15819</a>
Pathways:	<a href="#">Positive Regulation of Response to DNA Damage Stimulus</a>

## Application Details

Application Notes:	WB 1:500-1:2000 IHC 1:50-1:200
Restrictions:	For Research Use only

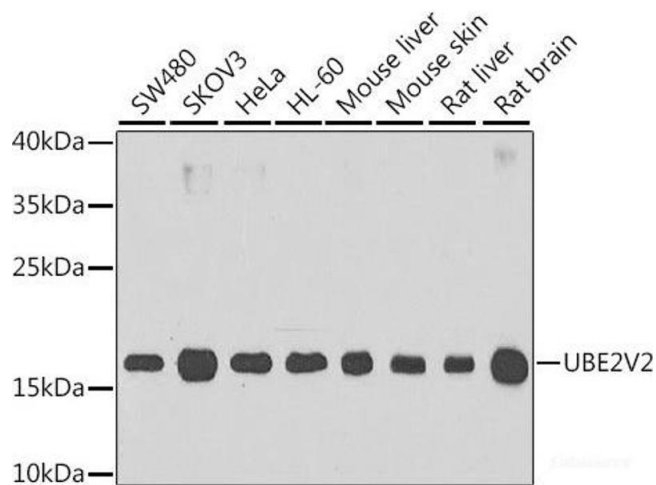
## Handling

Format:	Liquid
Concentration:	1 mg/mL
Buffer:	PBS with 0.02 % sodium azide, 50 % glycerol, pH 7.3
Preservative:	Sodium azide
Precaution of Use:	This product contains Sodium azide: a POISONOUS AND HAZARDOUS SUBSTANCE which should be handled by trained staff only.
Storage:	-20 °C
Storage Comment:	Store at -20°C. Avoid freeze / thaw cycles.



#### Immunohistochemistry (Paraffin-embedded Sections)

**Image 1.** Immunohistochemistry of paraffin-embedded Rat spleen using UBE2V2 Polyclonal Antibody at dilution of 1:100 (40x lens).



#### Western Blotting

**Image 2.** Western blot analysis of extracts of various cell lines using UBE2V2 Polyclonal Antibody at dilution of 1:1000.