

Datasheet for ABIN7262957

anti-HIRIP3 antibody

7 Images

[Go to Product page](#)

Overview

Quantity:	200 µL
Target:	HIRIP3
Reactivity:	Human, Mouse, Rat
Host:	Rabbit
Clonality:	Polyclonal
Conjugate:	This HIRIP3 antibody is un-conjugated
Application:	Immunohistochemistry (IHC), Immunofluorescence (IF)

Product Details

Immunogen:	Recombinant fusion protein of human HIRIP3 (NP_003600.2).
Isotype:	IgG
Characteristics:	Polyclonal Antibody
Purification:	Affinity purification

Target Details

Target:	HIRIP3
Alternative Name:	HIRIP3 (HIRIP3 Products)
Background:	<p>The HIRA protein shares sequence similarity with Hir1p and Hir2p, the two corepressors of histone gene transcription characterized in the yeast, <i>Saccharomyces cerevisiae</i>. The structural features of the HIRA protein suggest that it may function as part of a multiprotein complex.</p> <p>Several cDNAs encoding HIRA-interacting proteins, or HIRIPs, have been identified. In vitro, the</p>

Target Details

protein encoded by this gene binds HIRA, as well as H2B and H3 core histones, indicating that a complex containing HIRA-HIRIP3 could function in some aspects of chromatin and histone metabolism. Alternatively spliced transcript variants encoding distinct isoforms have been found for this gene.

Gene ID: 8479

UniProt: [Q9BW71](#)

Application Details

Application Notes: IHC 1:50-1:200 IF 1:50-1:100

Restrictions: For Research Use only

Handling

Format: Liquid

Concentration: 1 mg/mL

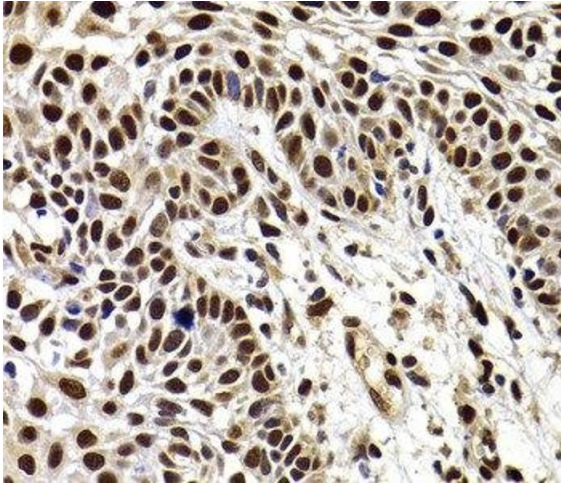
Buffer: PBS with 0.02 % sodium azide, 50 % glycerol, pH 7.3

Preservative: Sodium azide

Precaution of Use: This product contains Sodium azide: a POISONOUS AND HAZARDOUS SUBSTANCE which should be handled by trained staff only.

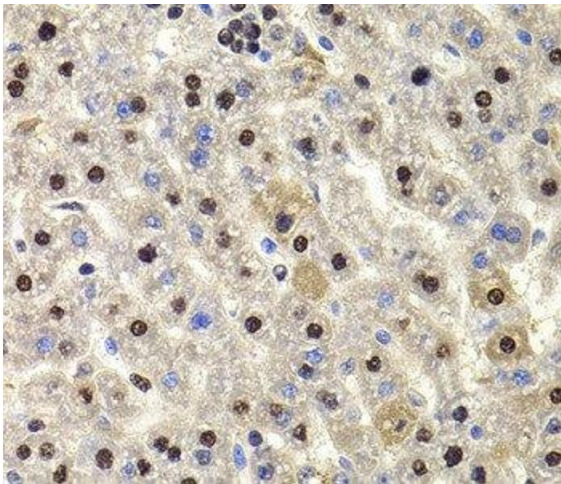
Storage: -20 °C

Storage Comment: Store at -20°C. Avoid freeze / thaw cycles.



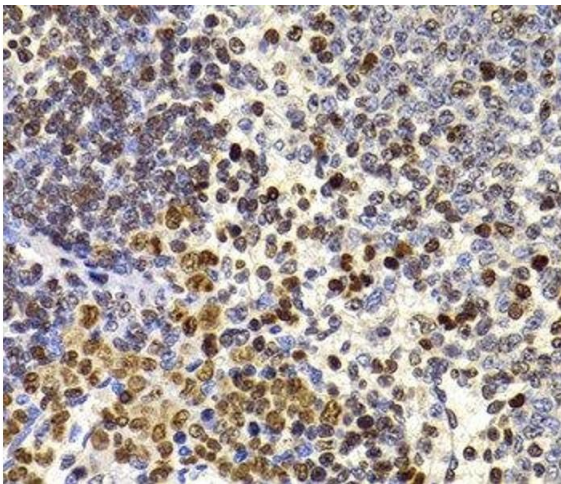
Immunohistochemistry (Paraffin-embedded Sections)

Image 1. Immunohistochemistry of paraffin-embedded Human well-differentiated squamous skin carcinoma using HIRIP3 Polyclonal Antibody at dilution of 1:100 (40x lens).



Immunohistochemistry (Paraffin-embedded Sections)

Image 2. Immunohistochemistry of paraffin-embedded Rat liver using HIRIP3 Polyclonal Antibody at dilution of 1:100 (40x lens).



Immunohistochemistry (Paraffin-embedded Sections)

Image 3. Immunohistochemistry of paraffin-embedded Rat spleen using HIRIP3 Polyclonal Antibody at dilution of 1:100 (40x lens).

Please check the [product details page](#) for more images. Overall 7 images are available for ABIN7262957.