

Datasheet for ABIN7262977

anti-Cyclin E2 antibody**2** Images[Go to Product page](#)

Overview

Quantity:	200 µL
Target:	Cyclin E2 (CCNE2)
Reactivity:	Human
Host:	Rabbit
Clonality:	Polyclonal
Conjugate:	This Cyclin E2 antibody is un-conjugated
Application:	Western Blotting (WB), Immunofluorescence (IF)

Product Details

Immunogen:	Recombinant fusion protein of human CCNE2 (NP_477097.1).
Isotype:	IgG
Characteristics:	Polyclonal Antibody
Purification:	Affinity purification

Target Details

Target:	Cyclin E2 (CCNE2)
Alternative Name:	CCNE2 (CCNE2 Products)
Background:	The protein encoded by this gene belongs to the highly conserved cyclin family, whose members are characterized by a dramatic periodicity in protein abundance through the cell cycle. Cyclins function as regulators of CDK kinases. Different cyclins exhibit distinct expression and degradation patterns which contribute to the temporal coordination of each

Target Details

mitotic event. This cyclin forms a complex with and functions as a regulatory subunit of CDK2. This cyclin has been shown to specifically interact with CIP/KIP family of CDK inhibitors, and plays a role in cell cycle G1/S transition. The expression of this gene peaks at the G1-S phase and exhibits a pattern of tissue specificity distinct from that of cyclin E1. A significantly increased expression level of this gene was observed in tumor-derived cells.

Molecular Weight:	Observed_MW: 47 kDa Calculated_MW: 41 kDa/46 kDa
-------------------	---

Gene ID:	9134
----------	------

UniProt:	O96020
----------	------------------------

Pathways:	Cell Division Cycle, Mitotic G1-G1/S Phases
-----------	---

Application Details

Application Notes:	WB 1:500-1:2000 IF 1:50-1:200
--------------------	-------------------------------

Restrictions:	For Research Use only
---------------	-----------------------

Handling

Format:	Liquid
---------	--------

Concentration:	1 mg/mL
----------------	---------

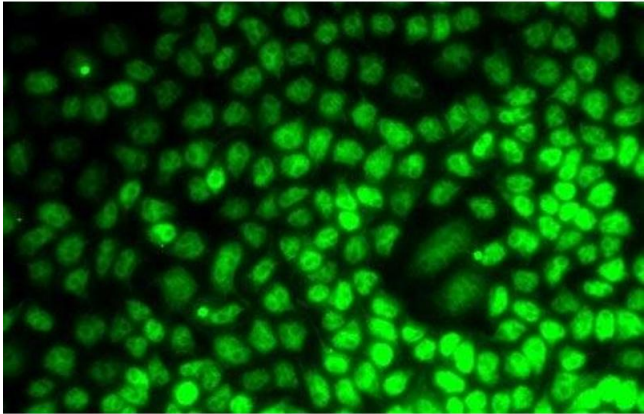
Buffer:	PBS with 0.02 % sodium azide, 50 % glycerol, pH 7.3
---------	---

Preservative:	Sodium azide
---------------	--------------

Precaution of Use:	This product contains Sodium azide: a POISONOUS AND HAZARDOUS SUBSTANCE which should be handled by trained staff only.
--------------------	--

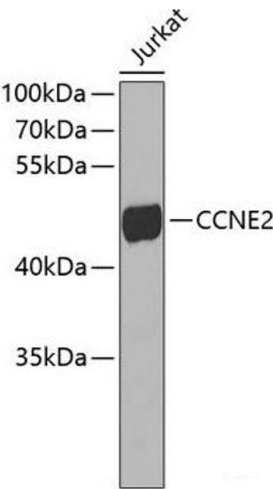
Storage:	-20 °C
----------	--------

Storage Comment:	Store at -20°C. Avoid freeze / thaw cycles.
------------------	---



Immunofluorescence

Image 1. Immunofluorescence analysis of MCF7 cells using CCNE2 Polyclonal Antibody



Western Blotting

Image 2. Western blot analysis of extracts of Jurkat cells using CCNE2 Polyclonal Antibody.