

Datasheet for ABIN7262997

**anti-HAND2 antibody****2** Images[Go to Product page](#)

## Overview

Quantity:	200 µL
Target:	HAND2
Reactivity:	Human, Mouse, Rat
Host:	Rabbit
Clonality:	Polyclonal
Conjugate:	This HAND2 antibody is un-conjugated
Application:	Western Blotting (WB), Immunofluorescence (IF)

## Product Details

Immunogen:	Recombinant fusion protein of human HAND2 (NP_068808.1).
Isotype:	IgG
Characteristics:	Polyclonal Antibody
Purification:	Affinity purification

## Target Details

Target:	HAND2
Alternative Name:	HAND2 ( <a href="#">HAND2 Products</a> )
Background:	The protein encoded by this gene belongs to the basic helix-loop-helix family of transcription factors. This gene product is one of two closely related family members, the HAND proteins, which are asymmetrically expressed in the developing ventricular chambers and play an essential role in cardiac morphogenesis. Working in a complementary fashion, they function in

## Target Details

the formation of the right ventricle and aortic arch arteries, implicating them as mediators of congenital heart disease. In addition, this transcription factor plays an important role in limb and branchial arch development.

Molecular Weight: Observed\_MW: 26 kDa  
Calculated\_MW: 20 kDa/23 kDa

Gene ID: 9464

UniProt: [P61296](#)

Pathways: [Tube Formation](#), [Feeding Behaviour](#)

## Application Details

Application Notes: WB 1:500-1:2000 IF 1:50-1:100

Restrictions: For Research Use only

## Handling

Format: Liquid

Concentration: 1 mg/mL

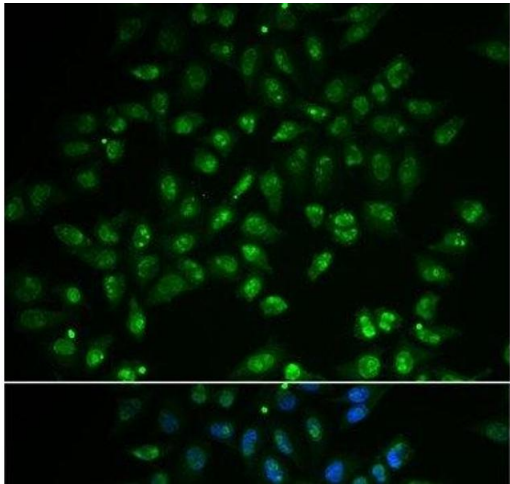
Buffer: PBS with 0.02 % sodium azide, 50 % glycerol, pH 7.3

Preservative: Sodium azide

Precaution of Use: This product contains Sodium azide: a POISONOUS AND HAZARDOUS SUBSTANCE which should be handled by trained staff only.

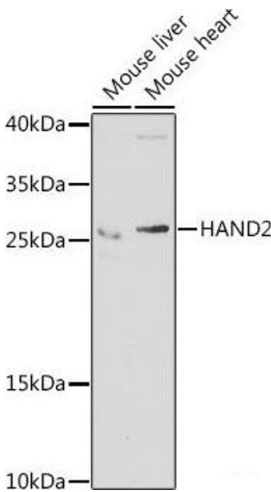
Storage: -20 °C

Storage Comment: Store at -20°C. Avoid freeze / thaw cycles.



Immunofluorescence

**Image 1.** Immunofluorescence analysis of A549 cells using HAND2 Polyclonal Antibody



Western Blotting

**Image 2.** Western blot analysis of extracts of various cell lines using HAND2 Polyclonal Antibody at dilution of 1:1000.