

Datasheet for ABIN7263029

**anti-STAMPB antibody**

## 4 Images

[Go to Product page](#)

## Overview

Quantity:	200 µL
Target:	STAMPB
Reactivity:	Human, Mouse, Rat
Host:	Rabbit
Clonality:	Polyclonal
Conjugate:	This STAMPB antibody is un-conjugated
Application:	Western Blotting (WB), Immunohistochemistry (IHC), Immunofluorescence (IF)

## Product Details

Immunogen:	Recombinant fusion protein of human STAMPB (NP_998787.1).
Isotype:	IgG
Characteristics:	Polyclonal Antibody
Purification:	Affinity purification

## Target Details

Target:	STAMPB
Alternative Name:	STAMPB ( <a href="#">STAMPB Products</a> )
Background:	Cytokine-mediated signal transduction in the JAK-STAT cascade requires the involvement of adaptor molecules. One such signal-transducing adaptor molecule contains an SH3 domain that is required for induction of MYC and cell growth. The protein encoded by this gene binds to the SH3 domain of the signal-transducing adaptor molecule, and plays a critical role in cytokine-

## Target Details

mediated signaling for MYC induction and cell cycle progression. Multiple alternatively spliced transcript variants encoding the same protein isoform have been found for this gene.

Molecular Weight: Observed\_MW: 48 kDa  
Calculated\_MW: 39 kDa/48 kDa

Gene ID: 10617

UniProt: [O95630](#)

## Application Details

Application Notes: WB 1:500-1:2000 IHC 1:50-1:200 IF 1:50-1:100

Restrictions: For Research Use only

## Handling

Format: Liquid

Concentration: 1 mg/mL

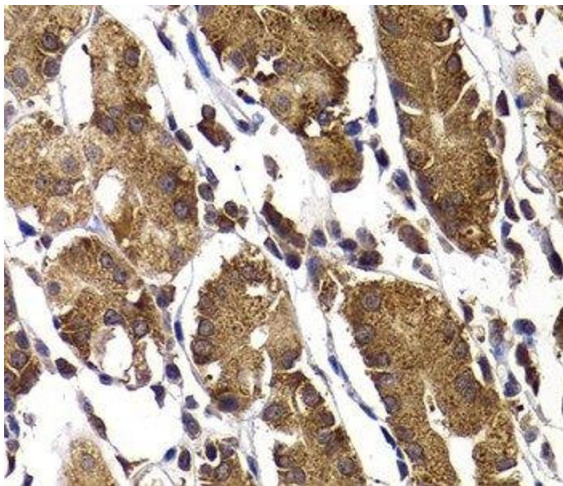
Buffer: PBS with 0.02 % sodium azide, 50 % glycerol, pH 7.3

Preservative: Sodium azide

Precaution of Use: This product contains Sodium azide: a POISONOUS AND HAZARDOUS SUBSTANCE which should be handled by trained staff only.

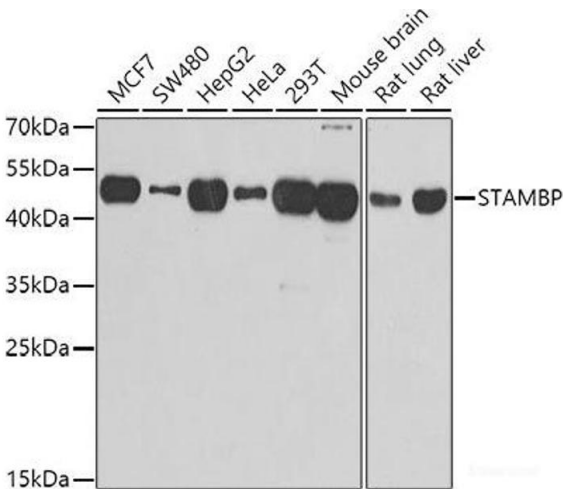
Storage: -20 °C

Storage Comment: Store at -20°C. Avoid freeze / thaw cycles.



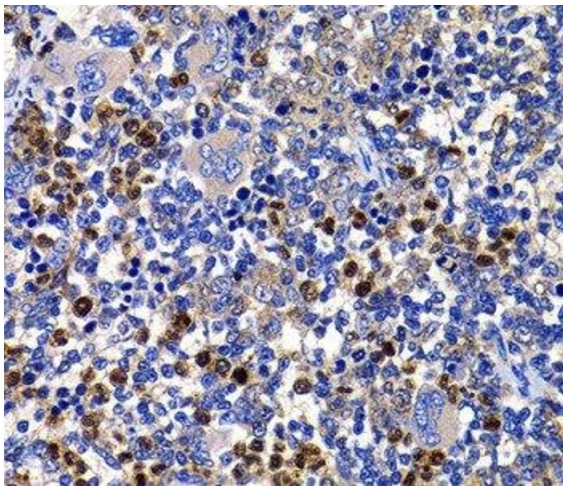
**Immunohistochemistry (Paraffin-embedded Sections)**

**Image 1.** Immunohistochemistry of paraffin-embedded Human stomach using STAMBP Polyclonal Antibody at dilution of 1:100 (40x lens).



**Western Blotting**

**Image 2.** Western blot analysis of extracts of various cell lines using STAMBP Polyclonal Antibody at dilution of 1:1000.



**Immunohistochemistry (Paraffin-embedded Sections)**

**Image 3.** Immunohistochemistry of paraffin-embedded Rat spleen using STAMBP Polyclonal Antibody at dilution of 1:100 (40x lens).

Please check the [product details page](#) for more images. Overall 4 images are available for ABIN7263029.