

Datasheet for ABIN7263045

**anti-ICOSLG antibody****3** Images[Go to Product page](#)

## Overview

Quantity:	200 µL
Target:	ICOSLG
Reactivity:	Human, Mouse, Rat
Host:	Rabbit
Clonality:	Polyclonal
Conjugate:	This ICOSLG antibody is un-conjugated
Application:	Western Blotting (WB), Immunohistochemistry (IHC)

## Product Details

Immunogen:	Recombinant fusion protein of human ICOSL (NP_056074.1).
Isotype:	IgG
Characteristics:	Polyclonal Antibody
Purification:	Affinity purification

## Target Details

Target:	ICOSLG
Alternative Name:	ICOSL ( <a href="#">ICOSLG Products</a> )
Background:	This gene is ligand for the T-cell-specific cell surface receptor ICOS. Acts as a costimulatory signal for T-cell proliferation and cytokine secretion, induces also B-cell proliferation and differentiation into plasma cells. May be play an important role in mediating local tissue responses to inflammatory conditions, as well as in modulating the secondary immune

## Target Details

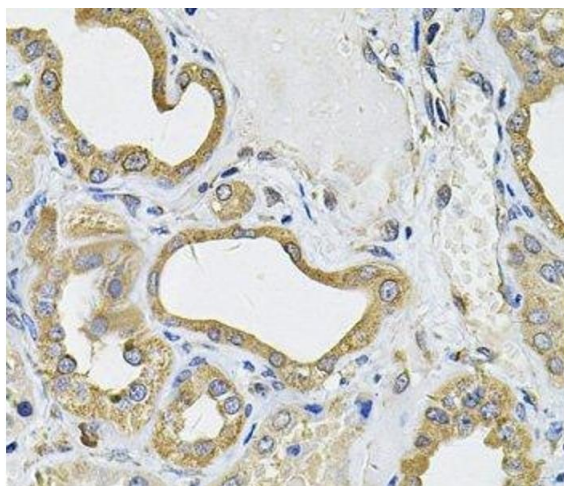
	response by co-stimulating memory T-cell function.
Molecular Weight:	Observed_MW: 50-70 kDa Calculated_MW: 20 kDa/33 kDa/34 kDa
Gene ID:	23308
UniProt:	<a href="#">O75144</a>
Pathways:	<a href="#">Production of Molecular Mediator of Immune Response, Activated T Cell Proliferation</a>

## Application Details

Application Notes:	WB 1:500-1:2000 IHC 1:50-1:200
Restrictions:	For Research Use only

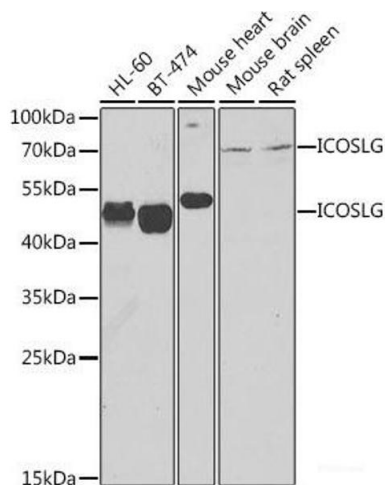
## Handling

Format:	Liquid
Concentration:	1 mg/mL
Buffer:	PBS with 0.02 % sodium azide, 50 % glycerol, pH 7.3
Preservative:	Sodium azide
Precaution of Use:	This product contains Sodium azide: a POISONOUS AND HAZARDOUS SUBSTANCE which should be handled by trained staff only.
Storage:	-20 °C
Storage Comment:	Store at -20°C. Avoid freeze / thaw cycles.



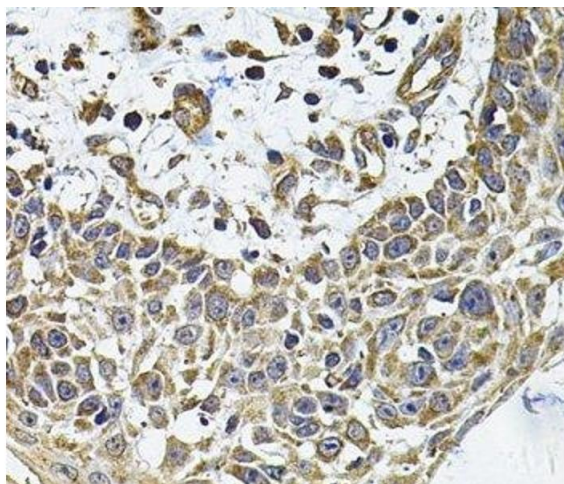
**Immunohistochemistry (Paraffin-embedded Sections)**

**Image 1.** Immunohistochemistry of paraffin-embedded Human kidney using ICOSL Polyclonal Antibody at dilution of 1:100 (40x lens).



**Western Blotting**

**Image 2.** Western blot analysis of extracts of various cell lines using ICOSL Polyclonal Antibody at dilution of 1:1000.



**Immunohistochemistry (Paraffin-embedded Sections)**

**Image 3.** Immunohistochemistry of paraffin-embedded Human skin carcinoma using ICOSL Polyclonal Antibody at dilution of 1:100 (40x lens).