



[Go to Product page](#)

Datasheet for ABIN7263075
anti-C16orf80 antibody

2 Images

Overview

Quantity:	200 µL
Target:	C16orf80
Reactivity:	Human, Mouse, Rat
Host:	Rabbit
Clonality:	Polyclonal
Conjugate:	This C16orf80 antibody is un-conjugated
Application:	Western Blotting (WB), Immunofluorescence (IF)

Product Details

Immunogen:	Recombinant fusion protein of human C16orf80 (NP_037374.1).
Isotype:	IgG
Characteristics:	Polyclonal Antibody
Purification:	Affinity purification

Target Details

Target:	C16orf80
Alternative Name:	C16orf80 (C16orf80 Products)
Background:	CFAP20 (Cilia And Flagella Associated Protein 20) is a Protein Coding gene. Diseases associated with CFAP20 include Familial Atrial Fibrillation. An important paralog of this gene is CFAP20DC.

Target Details

Molecular Weight: Observed_MW: 23 kDa
Calculated_MW: 22 kDa

Gene ID: 29105

UniProt: [Q9Y6A4](#)

Application Details

Application Notes: WB 1:500-1:2000 IF 1:50-1:100

Restrictions: For Research Use only

Handling

Format: Liquid

Concentration: 1 mg/mL

Buffer: PBS with 0.02 % sodium azide, 50 % glycerol, pH 7.3

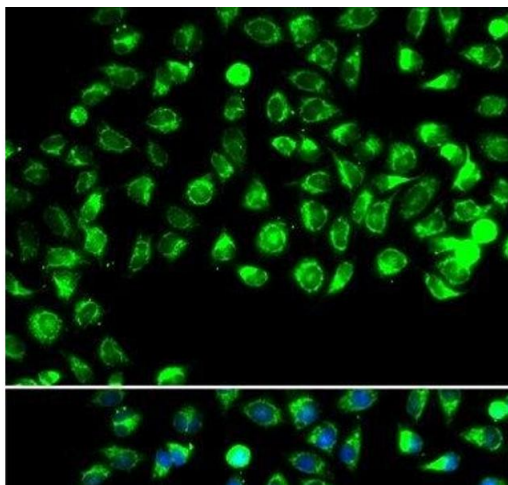
Preservative: Sodium azide

Precaution of Use: This product contains Sodium azide: a POISONOUS AND HAZARDOUS SUBSTANCE which should be handled by trained staff only.

Storage: -20 °C

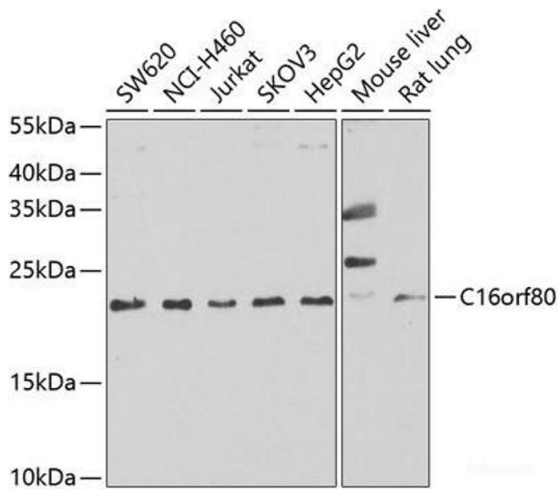
Storage Comment: Store at -20°C. Avoid freeze / thaw cycles.

Images



Immunofluorescence

Image 1. Immunofluorescence analysis of A549 cells using C16orf80 Polyclonal Antibody



Western Blotting

Image 2. Western blot analysis of extracts of various cell lines using C16orf80 Polyclonal Antibody at dilution of 1:1000.