



Datasheet for ABIN7263077

anti-LAP3 antibody



[Go to Product page](#)

1 Image

Overview

Quantity:	200 µL
Target:	LAP3
Reactivity:	Human, Mouse, Rat
Host:	Rabbit
Clonality:	Polyclonal
Conjugate:	This LAP3 antibody is un-conjugated
Application:	Immunohistochemistry (IHC)

Product Details

Immunogen:	Recombinant fusion protein of human LAP3 (NP_056991.2).
Isotype:	IgG
Characteristics:	Polyclonal Antibody
Purification:	Affinity purification

Target Details

Target:	LAP3
Alternative Name:	LAP3 (LAP3 Products)
Background:	LAP3 (Leucine Aminopeptidase 3) is a Protein Coding gene. Diseases associated with LAP3 include Bacterial Vaginosis and Trichomoniasis. Among its related pathways are Arginine and proline metabolism and Metabolism. Gene Ontology (GO) annotations related to this gene include peptidase activity and aminopeptidase activity. An important paralog of this gene is

Target Details

NPEPL1.

Gene ID: 51056

UniProt: [P28838](#)

Application Details

Application Notes: IHC 1:50-1:200

Restrictions: For Research Use only

Handling

Format: Liquid

Concentration: 1 mg/mL

Buffer: PBS with 0.02 % sodium azide, 50 % glycerol, pH 7.3

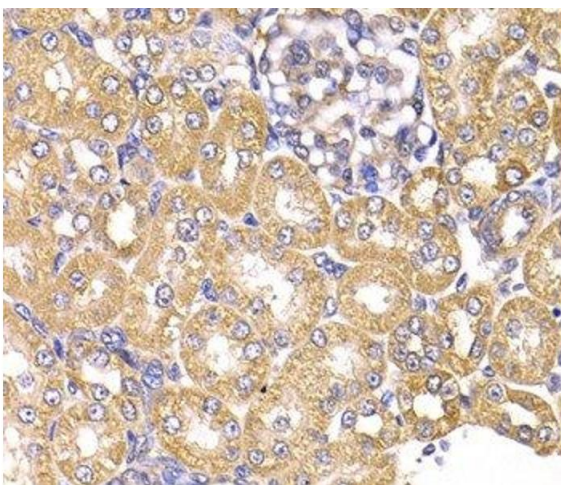
Preservative: Sodium azide

Precaution of Use: This product contains Sodium azide: a POISONOUS AND HAZARDOUS SUBSTANCE which should be handled by trained staff only.

Storage: -20 °C

Storage Comment: Store at -20°C. Avoid freeze / thaw cycles.

Images



Immunohistochemistry (Paraffin-embedded Sections)

Image 1. Immunohistochemistry of paraffin-embedded Rat kidney using LAP3 Polyclonal Antibody at dilution of 1:100 (40x lens).