

Datasheet for ABIN7263131

**anti-ART5 antibody****2** Images[Go to Product page](#)

## Overview

Quantity:	200 µL
Target:	ART5
Reactivity:	Human, Mouse, Rat
Host:	Rabbit
Clonality:	Polyclonal
Conjugate:	This ART5 antibody is un-conjugated
Application:	Western Blotting (WB), Immunohistochemistry (IHC)

## Product Details

Immunogen:	Recombinant fusion protein of human ART5 (NP_443750.2).
Isotype:	IgG
Characteristics:	Polyclonal Antibody
Purification:	Affinity purification

## Target Details

Target:	ART5
Alternative Name:	ART5 ( <a href="#">ART5 Products</a> )
Background:	<p>The protein encoded by this gene belongs to the ARG-specific ADP-ribosyltransferase family. Proteins in this family regulate the function of target proteins by attaching ADP-ribose to specific amino acid residues in their target proteins. The mouse homolog lacks a glycosylphosphatidylinositol-anchor signal sequence and is predicted to be a secretory enzyme.</p>

## Target Details

Several transcripts encoding different isoforms have been found for this gene.

Molecular Weight: Observed\_MW: 37 kDa  
Calculated\_MW: 25 kDa/32 kDa

Gene ID: 116969

UniProt: [Q96L15](#)

## Application Details

Application Notes: WB 1:500-1:2000 IHC 1:50-1:200

Restrictions: For Research Use only

## Handling

Format: Liquid

Concentration: 1 mg/mL

Buffer: PBS with 0.02 % sodium azide, 50 % glycerol, pH 7.3

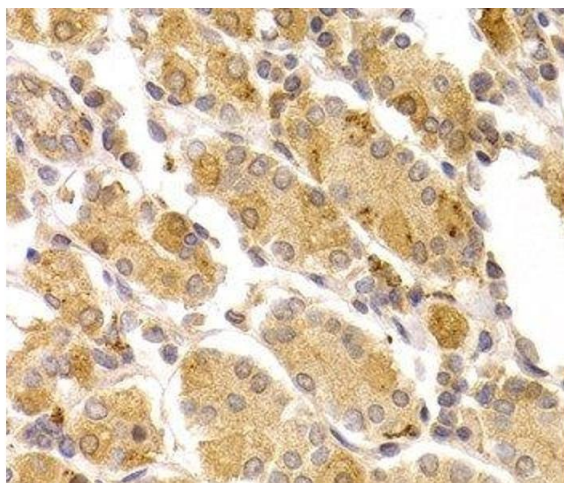
Preservative: Sodium azide

Precaution of Use: This product contains Sodium azide: a POISONOUS AND HAZARDOUS SUBSTANCE which should be handled by trained staff only.

Storage: -20 °C

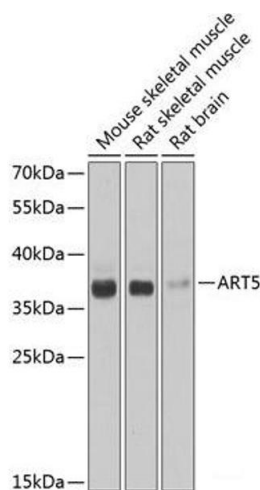
Storage Comment: Store at -20°C. Avoid freeze / thaw cycles.

## Images



### Immunohistochemistry (Paraffin-embedded Sections)

**Image 1.** Immunohistochemistry of paraffin-embedded Human stomach using ART5 Polyclonal Antibody at dilution of 1:100 (40x lens).



Western Blotting

**Image 2.** Western blot analysis of extracts of various cell lines using ART5 Polyclonal Antibody at dilution of 1:1000.