

Datasheet for ABIN7263135

**anti-COMMD1 antibody****2** Images[Go to Product page](#)

## Overview

Quantity:	200 µL
Target:	COMMD1
Reactivity:	Human, Mouse, Rat
Host:	Rabbit
Clonality:	Polyclonal
Conjugate:	This COMMD1 antibody is un-conjugated
Application:	Immunofluorescence (IF)

## Product Details

Immunogen:	Recombinant fusion protein of human COMMD1 (NP_689729.1).
Isotype:	IgG
Characteristics:	Polyclonal Antibody
Purification:	Affinity purification

## Target Details

Target:	COMMD1
Alternative Name:	COMMD1 ( <a href="#">COMMD1 Products</a> )
Background:	COMMD1 (Copper Metabolism Domain Containing 1) is a Protein Coding gene. Diseases associated with COMMD1 include Wilson Disease and Menkes Disease. Among its related pathways are HIF Repressors and Copper homeostasis. Gene Ontology (GO) annotations related to this gene include protein homodimerization activity and copper ion binding.

## Target Details

Gene ID:	150684
UniProt:	<a href="#">Q8N668</a>
Pathways:	<a href="#">Transition Metal Ion Homeostasis</a>

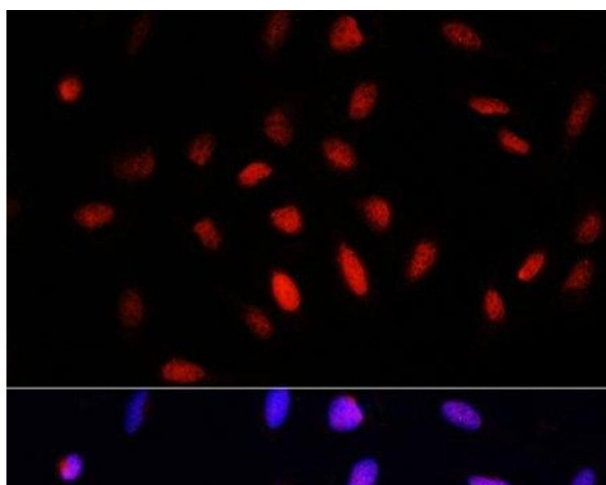
## Application Details

Application Notes:	IF 1:50-1:100
Restrictions:	For Research Use only

## Handling

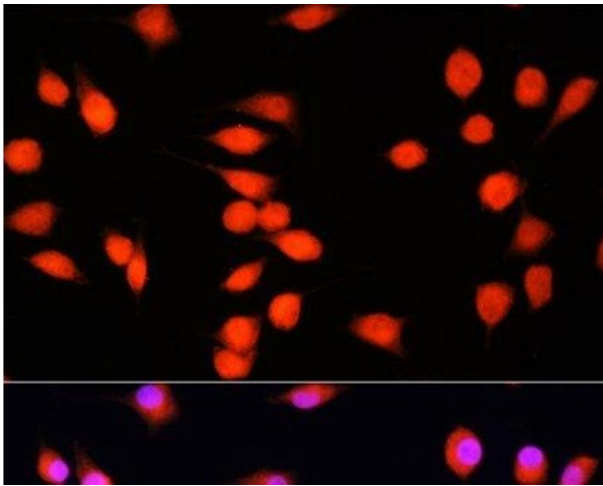
Format:	Liquid
Concentration:	1 mg/mL
Buffer:	PBS with 0.02 % sodium azide, 50 % glycerol, pH 7.3
Preservative:	Sodium azide
Precaution of Use:	This product contains Sodium azide: a POISONOUS AND HAZARDOUS SUBSTANCE which should be handled by trained staff only.
Storage:	-20 °C
Storage Comment:	Store at -20°C. Avoid freeze / thaw cycles.

## Images



### Immunofluorescence

**Image 1.** Immunofluorescence analysis of U2OS cells using COMMD1 Polyclonal Antibody at dilution of 1:100. Blue: DAPI for nuclear staining.



#### Immunofluorescence

**Image 2.** Immunofluorescence analysis of L929 cells using COMMD1 Polyclonal Antibody at dilution of 1:100. Blue: DAPI for nuclear staining.