

Datasheet for ABIN7263151

anti-BCL6 antibody

2 Images

[Go to Product page](#)

Overview

Quantity:	200 µL
Target:	BCL6
Reactivity:	Human, Mouse
Host:	Rabbit
Clonality:	Polyclonal
Conjugate:	This BCL6 antibody is un-conjugated
Application:	Western Blotting (WB), Immunofluorescence (IF)

Product Details

Immunogen:	Recombinant fusion protein of human BCL6 (NP_001697.2).
Isotype:	IgG
Characteristics:	Polyclonal Antibody
Purification:	Affinity purification

Target Details

Target:	BCL6
Alternative Name:	BCL6 (BCL6 Products)
Background:	<p>The protein encoded by this gene is a zinc finger transcription factor and contains an N-terminal POZ domain. This protein acts as a sequence-specific repressor of transcription, and has been shown to modulate the transcription of STAT-dependent IL-4 responses of B cells.</p> <p>This protein can interact with a variety of POZ-containing proteins that function as transcription</p>

Target Details

corepressors. This gene is found to be frequently translocated and hypermutated in diffuse large-cell lymphoma (DLCL), and may be involved in the pathogenesis of DLCL. Alternatively spliced transcript variants encoding different protein isoforms have been found for this gene.

Molecular Weight: Observed_MW: 110 kDa
Calculated_MW: 72 kDa/78 kDa

Gene ID: 604

UniProt: [P41182](#)

Pathways: [Chromatin Binding](#), [Regulation of Leukocyte Mediated Immunity](#), [Production of Molecular Mediator of Immune Response](#), [Protein targeting to Nucleus](#)

Application Details

Application Notes: WB 1:500-1:2000 IF 1:50-1:100

Restrictions: For Research Use only

Handling

Format: Liquid

Concentration: 1 mg/mL

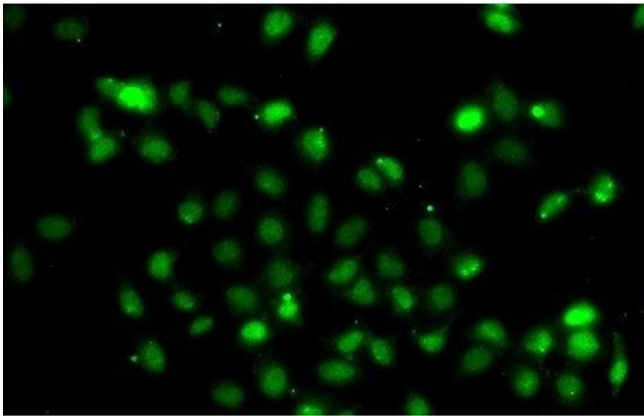
Buffer: PBS with 0.02 % sodium azide, 50 % glycerol, pH 7.3

Preservative: Sodium azide

Precaution of Use: This product contains Sodium azide: a POISONOUS AND HAZARDOUS SUBSTANCE which should be handled by trained staff only.

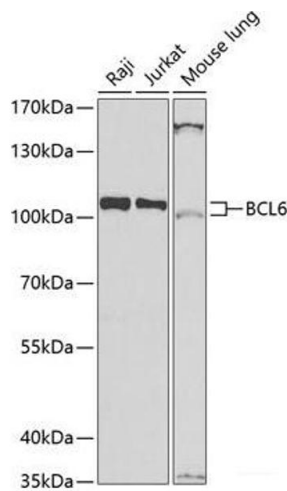
Storage: -20 °C

Storage Comment: Store at -20°C. Avoid freeze / thaw cycles.



Immunofluorescence

Image 1. Immunofluorescence analysis of A549 cells using BCL6 Polyclonal Antibody



Western Blotting

Image 2. Western blot analysis of extracts of various cell lines using BCL6 Polyclonal Antibody at dilution of 1:1000.