

Datasheet for ABIN7263155

anti-TNRC5 antibody[Go to Product page](#)**1** Image

Overview

| | |
|--------------|--------------------------------------|
| Quantity: | 200 µL |
| Target: | TNRC5 (CNPY3) |
| Reactivity: | Human, Mouse |
| Host: | Rabbit |
| Clonality: | Polyclonal |
| Conjugate: | This TNRC5 antibody is un-conjugated |
| Application: | Immunohistochemistry (IHC) |

Product Details

| | |
|------------------|--|
| Immunogen: | Recombinant fusion protein of human CNPY3 (NP_006577.2). |
| Isotype: | IgG |
| Characteristics: | Polyclonal Antibody |
| Purification: | Affinity purification |

Target Details

| | |
|-------------------|--|
| Target: | TNRC5 (CNPY3) |
| Alternative Name: | CNPY3 (CNPY3 Products) |
| Background: | This gene encodes a protein that binds members of the toll-like receptor protein family and functions as a chaperone to aid in folding and export of these proteins. Alternative splicing results in multiple transcript variants. Naturally occurring readthrough transcription occurs between this locus and the downstream GNMT (glycine N-methyltransferase) gene and is |

Target Details

| | |
|-----------|---|
| | represented with GeneID:107080644. |
| Gene ID: | 10695 |
| UniProt: | Q9BT09 |
| Pathways: | Activation of Innate immune Response , Toll-Like Receptors Cascades |

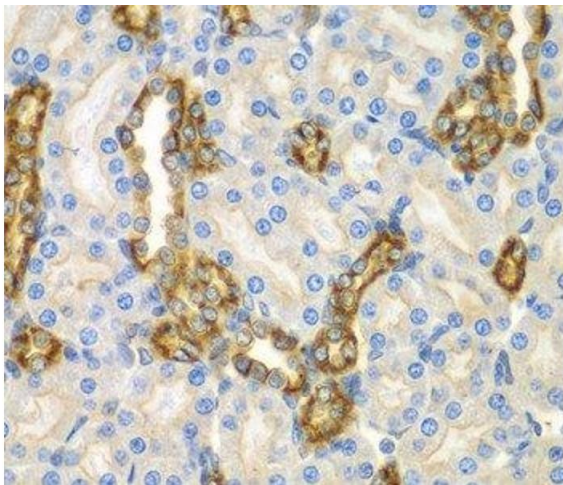
Application Details

| | |
|--------------------|-----------------------|
| Application Notes: | IHC 1:50-1:200 |
| Restrictions: | For Research Use only |

Handling

| | |
|--------------------|--|
| Format: | Liquid |
| Concentration: | 1 mg/mL |
| Buffer: | PBS with 0.02 % sodium azide, 50 % glycerol, pH 7.3 |
| Preservative: | Sodium azide |
| Precaution of Use: | This product contains Sodium azide: a POISONOUS AND HAZARDOUS SUBSTANCE which should be handled by trained staff only. |
| Storage: | -20 °C |
| Storage Comment: | Store at -20°C. Avoid freeze / thaw cycles. |

Images



Immunohistochemistry (Paraffin-embedded Sections)

Image 1. Immunohistochemistry of paraffin-embedded Mouse kidney using CNPY3 Polyclonal Antibody at dilution of 1:100 (40x lens).