



Datasheet for ABIN7263175

## anti-KLF3 antibody



[Go to Product page](#)

### 1 Image

#### Overview

Quantity:	200 µL
Target:	KLF3
Reactivity:	Human
Host:	Rabbit
Clonality:	Polyclonal
Conjugate:	This KLF3 antibody is un-conjugated
Application:	Immunofluorescence (IF)

#### Product Details

Immunogen:	Recombinant fusion protein of human KLF3 (NP_057615.3).
Isotype:	IgG
Characteristics:	Polyclonal Antibody
Purification:	Affinity purification

#### Target Details

Target:	KLF3
Alternative Name:	KLF3 ( <a href="#">KLF3 Products</a> )
Background:	KLF3 (Kruppel Like Factor 3) is a Protein Coding gene. Among its related pathways are Transcriptional misregulation in cancer. Gene Ontology (GO) annotations related to this gene include DNA-binding transcription factor activity. An important paralog of this gene is KLF12.

## Target Details

---

Gene ID: 51274

UniProt: [P57682](#)

## Application Details

---

Application Notes: IF 1:50-1:100

Restrictions: For Research Use only

## Handling

---

Format: Liquid

Concentration: 1 mg/mL

Buffer: PBS with 0.02 % sodium azide, 50 % glycerol, pH 7.3

Preservative: Sodium azide

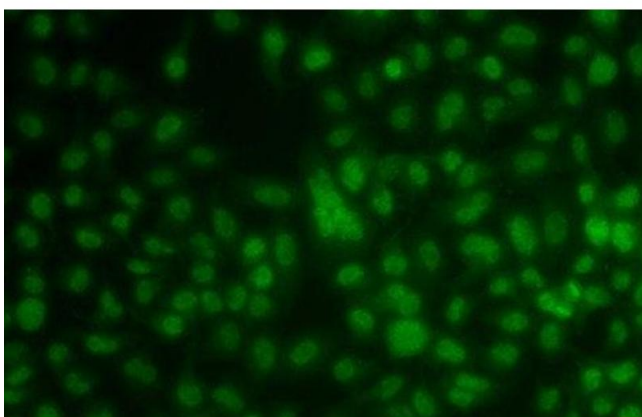
Precaution of Use: This product contains Sodium azide: a POISONOUS AND HAZARDOUS SUBSTANCE which should be handled by trained staff only.

Storage: -20 °C

Storage Comment: Store at -20°C. Avoid freeze / thaw cycles.

## Images

---



### Immunofluorescence

**Image 1.** Immunofluorescence analysis of A549 cells using KLF3 Polyclonal Antibody