

Datasheet for ABIN7263195

anti-SAT2 antibody[Go to Product page](#)**1** Image

Overview

Quantity:	200 µL
Target:	SAT2
Reactivity:	Human, Mouse
Host:	Rabbit
Clonality:	Polyclonal
Conjugate:	This SAT2 antibody is un-conjugated
Application:	Immunofluorescence (IF)

Product Details

Immunogen:	Recombinant fusion protein of human SAT2 (NP_597998.1).
Isotype:	IgG
Characteristics:	Polyclonal Antibody
Purification:	Affinity purification

Target Details

Target:	SAT2
Alternative Name:	SAT2 (SAT2 Products)
Background:	<p>SAT2 (Spermidine/Spermine N1-Acetyltransferase Family Member 2) is a Protein Coding gene. Among its related pathways are Arginine and proline metabolism and Metabolism. Gene Ontology (GO) annotations related to this gene include transferase activity, transferring acyl groups other than amino-acyl groups and diamine N-acetyltransferase activity. An important</p>

Target Details

paralog of this gene is SAT1.

Gene ID: 112483

UniProt: [Q96F10](#)

Application Details

Application Notes: IF 1:50-1:100

Restrictions: For Research Use only

Handling

Format: Liquid

Concentration: 1 mg/mL

Buffer: PBS with 0.02 % sodium azide, 50 % glycerol, pH 7.3

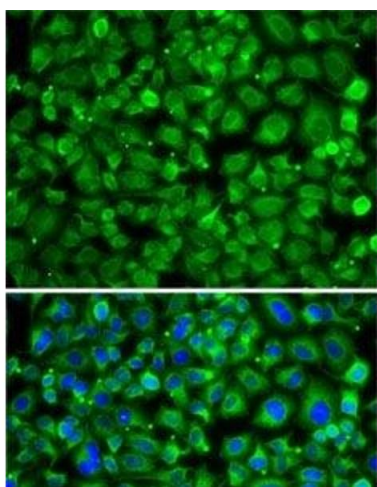
Preservative: Sodium azide

Precaution of Use: This product contains Sodium azide: a POISONOUS AND HAZARDOUS SUBSTANCE which should be handled by trained staff only.

Storage: -20 °C

Storage Comment: Store at -20°C. Avoid freeze / thaw cycles.

Images



Immunofluorescence

Image 1. Immunofluorescence analysis of A-549 cells using SAT2 Polyclonal Antibody