

Datasheet for ABIN7263219

**anti-SLC35A2 antibody****1** Image[Go to Product page](#)

## Overview

Quantity:	200 µL
Target:	SLC35A2
Reactivity:	Human
Host:	Rabbit
Clonality:	Polyclonal
Conjugate:	This SLC35A2 antibody is un-conjugated
Application:	Immunofluorescence (IF)

## Product Details

Immunogen:	Recombinant fusion protein of human SLC35A2 (NP_001027460.1).
Isotype:	IgG
Characteristics:	Polyclonal Antibody
Purification:	Affinity purification

## Target Details

Target:	SLC35A2
Alternative Name:	SLC35A2 ( <a href="#">SLC35A2 Products</a> )
Background:	This gene encodes a member of the nucleotide-sugar transporter family. The encoded protein is a multi-pass membrane protein. It transports UDP-galactose from the cytosol into Golgi vesicles, where it serves as a glycosyl donor for the generation of glycans. Mutations in this gene cause congenital disorder of glycosylation type II <sub>m</sub> (CDG2M). Multiple alternatively spliced

## Target Details

transcript variants encoding distinct isoforms have been found for this gene.

Gene ID: 7355

UniProt: [P78381](#)

## Application Details

Application Notes: IF 1:50-1:200

Restrictions: For Research Use only

## Handling

Format: Liquid

Concentration: 1 mg/mL

Buffer: PBS with 0.02 % sodium azide, 50 % glycerol, pH 7.3

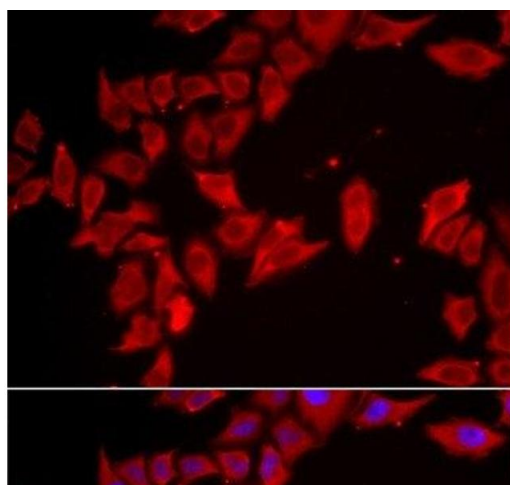
Preservative: Sodium azide

Precaution of Use: This product contains Sodium azide: a POISONOUS AND HAZARDOUS SUBSTANCE which should be handled by trained staff only.

Storage: -20 °C

Storage Comment: Store at -20°C. Avoid freeze / thaw cycles.

## Images



### Immunofluorescence

**Image 1.** Immunofluorescence analysis of HeLa cells using SLC35A2 Polyclonal Antibody