

Datasheet for ABIN7263251

anti-BNIP1 antibody**2** Images[Go to Product page](#)

Overview

| | |
|--------------|---|
| Quantity: | 200 µL |
| Target: | BNIP1 |
| Reactivity: | Human, Mouse, Rat |
| Host: | Rabbit |
| Clonality: | Polyclonal |
| Conjugate: | This BNIP1 antibody is un-conjugated |
| Application: | Western Blotting (WB), Immunohistochemistry (IHC) |

Product Details

| | |
|------------------|--|
| Immunogen: | Recombinant fusion protein of human BNIP1 (NP_001196.2). |
| Isotype: | IgG |
| Characteristics: | Polyclonal Antibody |
| Purification: | Affinity purification |

Target Details

| | |
|-------------------|---|
| Target: | BNIP1 |
| Alternative Name: | BNIP1 (BNIP1 Products) |
| Background: | This gene is a member of the BCL2/adenovirus E1B 19 kd-interacting protein (BNIP) family. It interacts with the E1B 19 kDa protein, which protects cells from virally-induced cell death. The encoded protein also interacts with E1B 19 kDa-like sequences of BCL2, another apoptotic protector. In addition, this protein is involved in vesicle transport into the endoplasmic |

Target Details

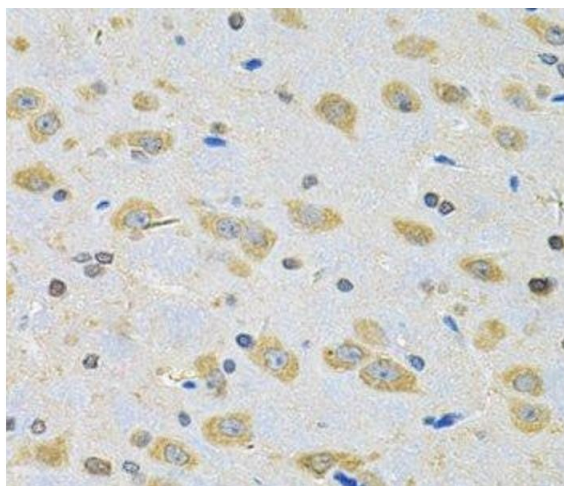
| | |
|-------------------|--|
| | reticulum. Alternative splicing of this gene results in four protein products with identical N- and C-termini. |
| Molecular Weight: | Observed_MW: 26 kDa Calculated_MW: 22 kDa/26 kDa/27 kDa/31 kDa |
| Gene ID: | 662 |
| UniProt: | Q12981 |

Application Details

| | |
|--------------------|--------------------------------|
| Application Notes: | WB 1:500-1:2000 IHC 1:50-1:200 |
| Restrictions: | For Research Use only |

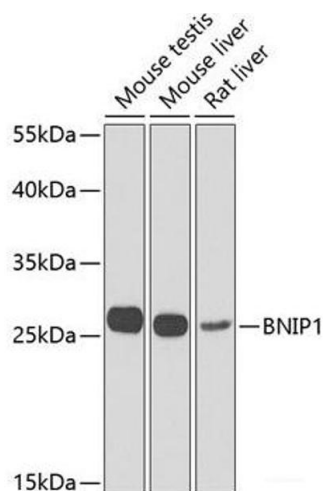
Handling

| | |
|--------------------|--|
| Format: | Liquid |
| Concentration: | 1 mg/mL |
| Buffer: | PBS with 0.02 % sodium azide, 50 % glycerol, pH 7.3 |
| Preservative: | Sodium azide |
| Precaution of Use: | This product contains Sodium azide: a POISONOUS AND HAZARDOUS SUBSTANCE which should be handled by trained staff only. |
| Storage: | -20 °C |
| Storage Comment: | Store at -20°C. Avoid freeze / thaw cycles. |



Immunohistochemistry (Paraffin-embedded Sections)

Image 1. Immunohistochemistry of paraffin-embedded Rat brain using BNIP1 Polyclonal Antibody at dilution of 1:100 (40x lens).



Western Blotting

Image 2. Western blot analysis of extracts of various cell lines using BNIP1 Polyclonal Antibody at dilution of 1:1000.