

Datasheet for ABIN7263315

**anti-TFEB antibody****3** Images[Go to Product page](#)

## Overview

Quantity:	200 µL
Target:	TFEB
Reactivity:	Human, Mouse, Rat
Host:	Rabbit
Clonality:	Polyclonal
Conjugate:	This TFEB antibody is un-conjugated
Application:	Western Blotting (WB), Immunofluorescence (IF)

## Product Details

Immunogen:	Recombinant protein of human TFEB.
Isotype:	IgG
Characteristics:	Polyclonal Antibody
Purification:	Affinity purification

## Target Details

Target:	TFEB
Alternative Name:	TFEB ( <a href="#">TFEB Products</a> )
Background:	TFEB (Transcription Factor EB) is a Protein Coding gene. Diseases associated with TFEB include Renal Cell Carcinoma, Xp11-Associated and Pycnodysostosis. Among its related pathways are Mitophagy - animal and Apoptosis and Autophagy. Gene Ontology (GO) annotations related to this gene include DNA-binding transcription factor activity and protein

## Target Details

dimerization activity. An important paralog of this gene is MITF.

Molecular Weight: Observed\_MW: 70 kDa  
Calculated\_MW: 43 kDa/52 kDa

Gene ID: 7942

UniProt: [P19484](#)

## Application Details

Application Notes: WB 1:500-1:2000 IF 1:50-1:200

Restrictions: For Research Use only

## Handling

Format: Liquid

Concentration: 1 mg/mL

Buffer: PBS with 0.02 % sodium azide, 50 % glycerol, pH 7.3

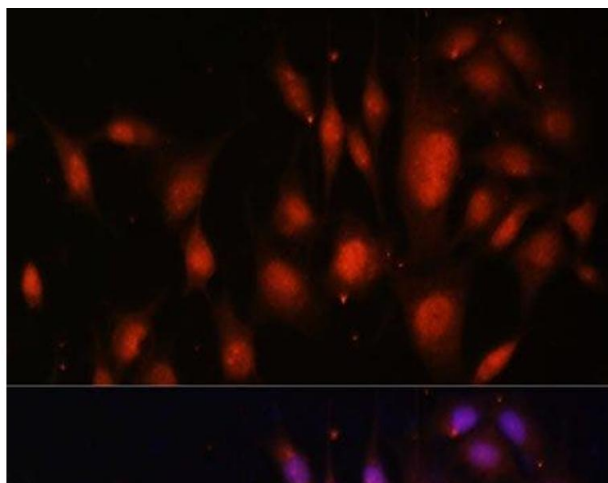
Preservative: Sodium azide

Precaution of Use: This product contains Sodium azide: a POISONOUS AND HAZARDOUS SUBSTANCE which should be handled by trained staff only.

Storage: -20 °C

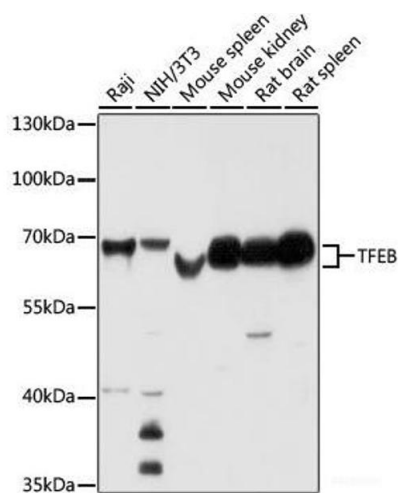
Storage Comment: Store at -20°C. Avoid freeze / thaw cycles.

## Images



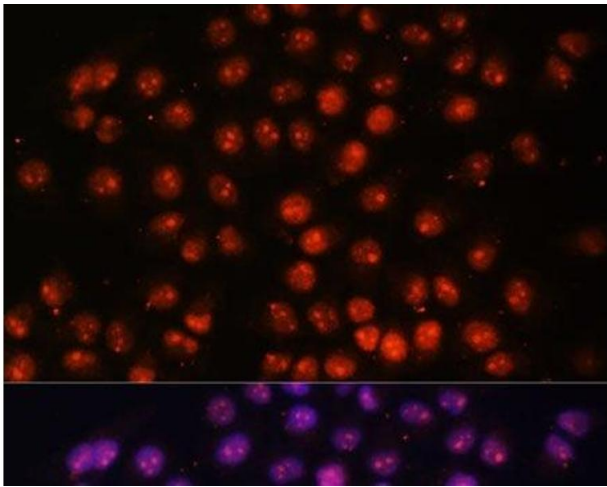
### Immunofluorescence

**Image 1.** Immunofluorescence analysis of NIH/3T3 cells using TFEB Polyclonal Antibody at dilution of 1:100. Blue: DAPI for nuclear staining.



Western Blotting

**Image 2.** Western blot analysis of extracts of various cell lines using TFEB Polyclonal Antibody at dilution of 1:1000.



Immunofluorescence

**Image 3.** Immunofluorescence analysis of HeLa cells using TFEB Polyclonal Antibody at dilution of 1:100. Blue: DAPI for nuclear staining.