

Datasheet for ABIN7263317

anti-TMLHE antibody[Go to Product page](#)

1 Image

Overview

Quantity:	200 µL
Target:	TMLHE
Reactivity:	Human
Host:	Rabbit
Clonality:	Polyclonal
Conjugate:	This TMLHE antibody is un-conjugated
Application:	Immunofluorescence (IF)

Product Details

Immunogen:	Recombinant fusion protein of human TMLHE (NP_001171726.1).
Isotype:	IgG
Characteristics:	Polyclonal Antibody
Purification:	Affinity purification

Target Details

Target:	TMLHE
Alternative Name:	TMLHE (TMLHE Products)
Background:	This gene encodes the protein trimethyllysine dioxygenase which is the first enzyme in the carnitine biosynthesis pathway. Carnitine play an essential role in the transport of activated fatty acids across the inner mitochondrial membrane. The encoded protein converts trimethyllysine into hydroxytrimethyllysine. A pseudogene of this gene is found on chromosome

Target Details

X. Alternate splicing results in multiple transcript variants.

Gene ID: 55217

UniProt: [Q9NVH6](#)

Application Details

Application Notes: IF 1:50-1:100

Restrictions: For Research Use only

Handling

Format: Liquid

Concentration: 1 mg/mL

Buffer: PBS with 0.02 % sodium azide, 50 % glycerol, pH 7.3

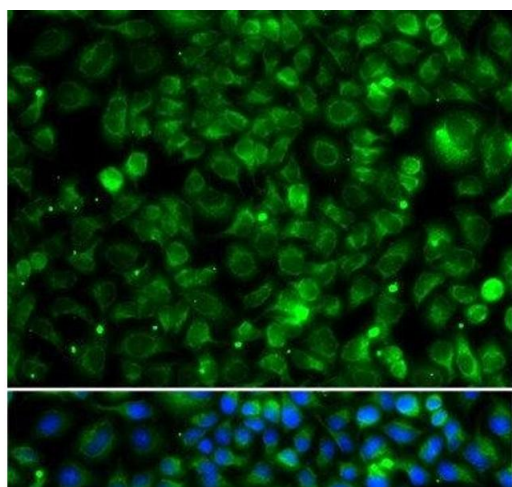
Preservative: Sodium azide

Precaution of Use: This product contains Sodium azide: a POISONOUS AND HAZARDOUS SUBSTANCE which should be handled by trained staff only.

Storage: -20 °C

Storage Comment: Store at -20°C. Avoid freeze / thaw cycles.

Images



Immunofluorescence

Image 1. Immunofluorescence analysis of MCF-7 cells using TMLHE Polyclonal Antibody