



[Go to Product page](#)

Datasheet for ABIN7263321
anti-TWIST1 antibody

2 Images

Overview

Quantity:	200 µL
Target:	TWIST1
Reactivity:	Human, Mouse
Host:	Rabbit
Clonality:	Polyclonal
Conjugate:	This TWIST1 antibody is un-conjugated
Application:	Immunofluorescence (IF)

Product Details

Immunogen:	Recombinant fusion protein of human Twist (NP_000465.1).
Isotype:	IgG
Characteristics:	Polyclonal Antibody
Purification:	Affinity purification

Target Details

Target:	TWIST1
Alternative Name:	Twist (TWIST1 Products)
Background:	Basic helix-loop-helix (bHLH) transcription factors have been implicated in cell lineage determination and differentiation. The protein encoded by this gene is a bHLH transcription factor and shares similarity with another bHLH transcription factor, Dermo1. The strongest expression of this mRNA is in placental tissue, in adults, mesodermally derived tissues express

Target Details

this mRNA preferentially. Mutations in this gene have been found in patients with Saethre-Chotzen syndrome.

Gene ID: 7291

UniProt: [Q15672](#)

Pathways: [p53 Signaling](#), [Proton Transport](#), [Tube Formation](#), [Negative Regulation of Transporter Activity](#)

Application Details

Application Notes: IF 1:50-1:100

Restrictions: For Research Use only

Handling

Format: Liquid

Concentration: 1 mg/mL

Buffer: PBS with 0.02 % sodium azide, 50 % glycerol, pH 7.3

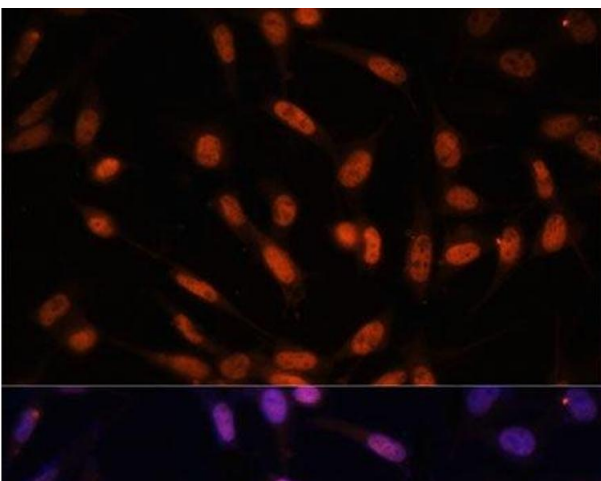
Preservative: Sodium azide

Precaution of Use: This product contains Sodium azide: a POISONOUS AND HAZARDOUS SUBSTANCE which should be handled by trained staff only.

Storage: -20 °C

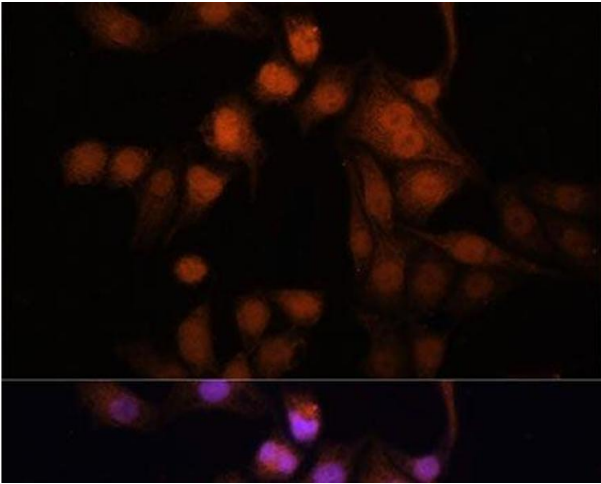
Storage Comment: Store at -20°C. Avoid freeze / thaw cycles.

Images



Immunofluorescence

Image 1. Immunofluorescence analysis of NIH/3T3 cells using Twist Polyclonal Antibody at dilution of 1:100. Blue: DAPI for nuclear staining.



Immunofluorescence

Image 2. Immunofluorescence analysis of HeLa cells using Twist Polyclonal Antibody at dilution of 1:100. Blue: DAPI for nuclear staining.