



[Go to Product page](#)

Datasheet for ABIN7263323
anti-UBE2J2 antibody

2 Images

Overview

Quantity:	200 µL
Target:	UBE2J2
Reactivity:	Human, Mouse, Rat
Host:	Rabbit
Clonality:	Polyclonal
Conjugate:	This UBE2J2 antibody is un-conjugated
Application:	Immunohistochemistry (IHC), Immunofluorescence (IF)

Product Details

Immunogen:	Recombinant fusion protein of human UBE2J2 (NP_477515.2).
Isotype:	IgG
Characteristics:	Polyclonal Antibody
Purification:	Affinity purification

Target Details

Target:	UBE2J2
Alternative Name:	UBE2J2 (UBE2J2 Products)
Background:	The modification of proteins with ubiquitin is an important cellular mechanism for targeting abnormal or short-lived proteins for degradation. Ubiquitination involves at least three classes of enzymes: ubiquitin-activating enzymes, or E1s, ubiquitin-conjugating enzymes, or E2s, and ubiquitin-protein ligases, or E3s. This gene encodes a member of the E2 ubiquitin-conjugating

Target Details

enzyme family. This enzyme is located in the membrane of the endoplasmic reticulum. Multiple alternatively spliced transcript variants have been found for this gene, but the full-length nature of some variants has not been defined.

Gene ID: 118424

UniProt: [Q8N2K1](#)

Application Details

Application Notes: IHC 1:50-1:200 IF 1:50-1:100

Restrictions: For Research Use only

Handling

Format: Liquid

Concentration: 1 mg/mL

Buffer: PBS with 0.02 % sodium azide, 50 % glycerol, pH 7.3

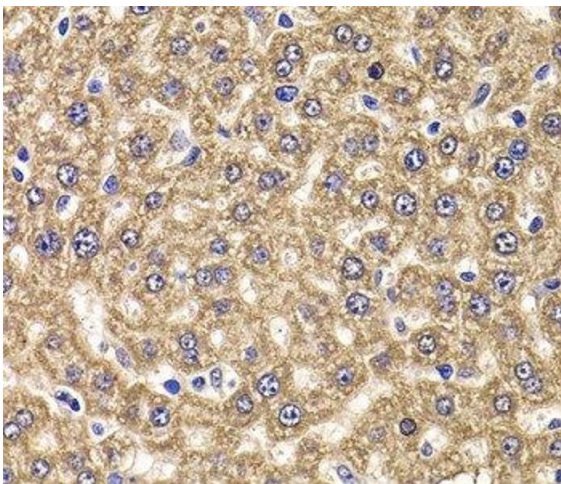
Preservative: Sodium azide

Precaution of Use: This product contains Sodium azide: a POISONOUS AND HAZARDOUS SUBSTANCE which should be handled by trained staff only.

Storage: -20 °C

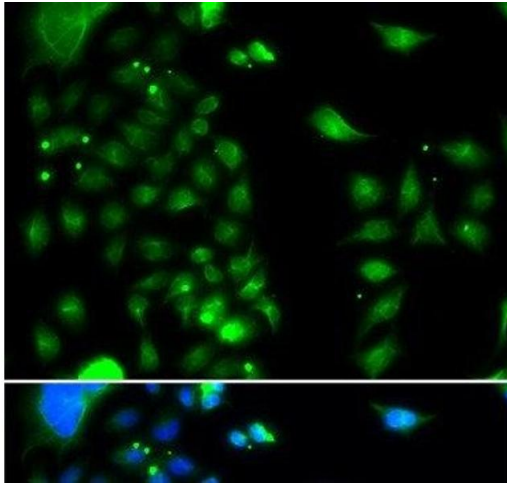
Storage Comment: Store at -20°C. Avoid freeze / thaw cycles.

Images



Immunohistochemistry (Paraffin-embedded Sections)

Image 1. Immunohistochemistry of paraffin-embedded Rat liver using UBE2J2 Polyclonal Antibody at dilution of 1:100 (40x lens).



Immunofluorescence

Image 2. Immunofluorescence analysis of MCF-7 cells using UBE2J2 Polyclonal Antibody