

Datasheet for ABIN7263327

**anti-YTHDC1 antibody****1** Image[Go to Product page](#)

## Overview

Quantity:	200 µL
Target:	YTHDC1
Reactivity:	Human, Mouse, Rat
Host:	Rabbit
Clonality:	Polyclonal
Conjugate:	This YTHDC1 antibody is un-conjugated
Application:	Immunofluorescence (IF)

## Product Details

Immunogen:	Recombinant fusion protein of human YTHDC1 (NP_001026902.1).
Isotype:	IgG
Characteristics:	Polyclonal Antibody
Purification:	Affinity purification

## Target Details

Target:	YTHDC1
Alternative Name:	YTHDC1 ( <a href="#">YTHDC1 Products</a> )
Background:	YTHDC1 (YTH Domain Containing 1) is a Protein Coding gene. Diseases associated with YTHDC1 include Periosteal Chondrosarcoma and Wilms Tumor 1. Among its related pathways are Chromatin Regulation / Acetylation. Gene Ontology (GO) annotations related to this gene include N6-methyladenosine-containing RNA binding. An important paralog of this gene is

## Target Details

	YTHDF1.
Gene ID:	91746
UniProt:	<a href="#">Q96MU7</a>

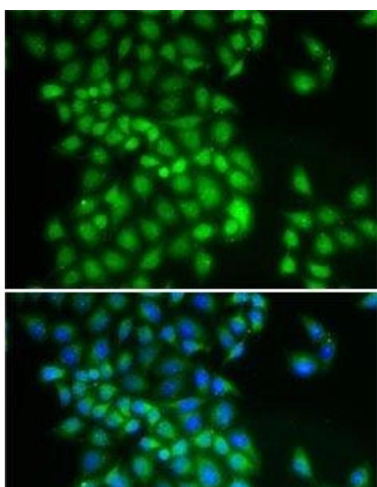
## Application Details

Application Notes:	IF 1:50-1:100
Restrictions:	For Research Use only

## Handling

Format:	Liquid
Concentration:	1 mg/mL
Buffer:	PBS with 0.02 % sodium azide, 50 % glycerol, pH 7.3
Preservative:	Sodium azide
Precaution of Use:	This product contains Sodium azide: a POISONOUS AND HAZARDOUS SUBSTANCE which should be handled by trained staff only.
Storage:	-20 °C
Storage Comment:	Store at -20°C. Avoid freeze / thaw cycles.

## Images



### Immunofluorescence

**Image 1.** Immunofluorescence analysis of A-549 cells using YTHDC1 Polyclonal Antibody