

Datasheet for ABIN7263335

anti-CAPG antibody

4 Images

[Go to Product page](#)

Overview

Quantity:	200 µL
Target:	CAPG
Reactivity:	Human, Mouse, Rat
Host:	Rabbit
Clonality:	Polyclonal
Conjugate:	This CAPG antibody is un-conjugated
Application:	Western Blotting (WB), Immunohistochemistry (IHC)

Product Details

Immunogen:	Recombinant fusion protein of human CAPG (NP_001738.2).
Isotype:	IgG
Specificity:	This antibody ist KO validated.
Characteristics:	Polyclonal Antibody
Purification:	Affinity purification
Grade:	KO Validated

Target Details

Target:	CAPG
Alternative Name:	CAPG (CAPG Products)
Background:	This gene encodes a member of the gelsolin/villin family of actin-regulatory proteins. The

Target Details

encoded protein reversibly blocks the barbed ends of F-actin filaments in a Ca^{2+} and phosphoinositide-regulated manner, but does not sever preformed actin filaments. By capping the barbed ends of actin filaments, the encoded protein contributes to the control of actin-based motility in non-muscle cells. Alternatively spliced transcript variants have been observed for this gene.

Molecular Weight: Observed_MW: 38 kDa
Calculated_MW: 36 kDa/38 kDa

Gene ID: 822

UniProt: [P40121](#)

Pathways: [Regulation of Actin Filament Polymerization](#)

Application Details

Application Notes: WB 1:500-1:2000 IHC 1:50-1:200

Restrictions: For Research Use only

Handling

Format: Liquid

Concentration: 1 mg/mL

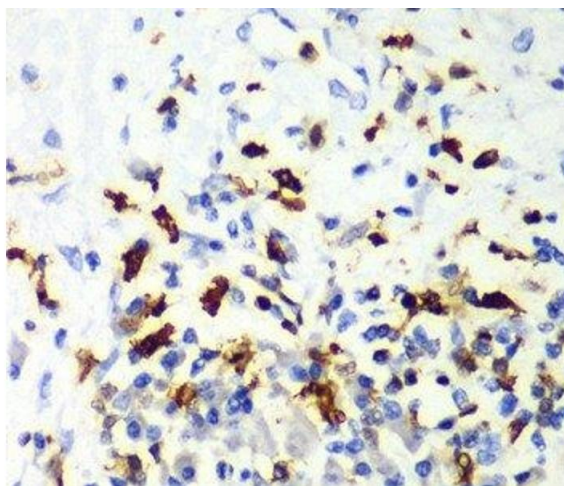
Buffer: PBS with 0.02 % sodium azide, 50 % glycerol, pH 7.3

Preservative: Sodium azide

Precaution of Use: This product contains Sodium azide: a POISONOUS AND HAZARDOUS SUBSTANCE which should be handled by trained staff only.

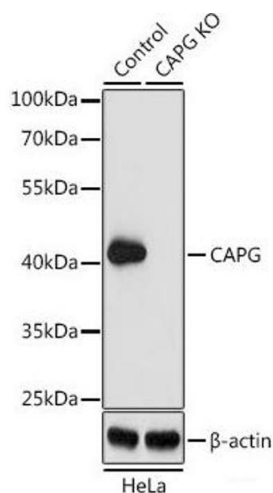
Storage: -20 °C

Storage Comment: Store at -20°C. Avoid freeze / thaw cycles.



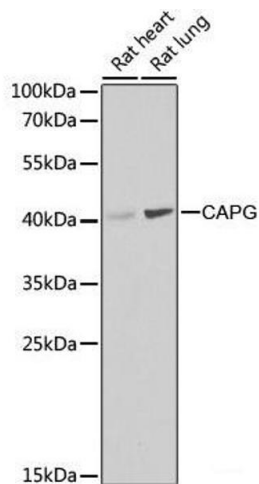
Immunohistochemistry (Paraffin-embedded Sections)

Image 1. Immunohistochemistry of paraffin-embedded Human liver cancer using CAPG Polyclonal Antibody at dilution of 1:100 (40x lens).



Western Blotting

Image 2. Western blot analysis of extracts from normal (control) and CAPG knockout (KO) HeLa cells using CAPG Polyclonal Antibody at dilution of 1:1000.



Western Blotting

Image 3. Western blot analysis of extracts of various cell lines using CAPG Polyclonal Antibody at dilution of 1:1000.

Please check the [product details page](#) for more images. Overall 4 images are available for ABIN7263335.