



[Go to Product page](#)

Datasheet for ABIN7263383

## anti-ERGIC2 antibody

### 1 Image

#### Overview

Quantity:	200 µL
Target:	ERGIC2
Reactivity:	Human, Mouse
Host:	Rabbit
Clonality:	Polyclonal
Conjugate:	This ERGIC2 antibody is un-conjugated
Application:	Immunohistochemistry (IHC)

#### Product Details

Immunogen:	Recombinant fusion protein of human ERGIC2 (NP_057654.2).
Isotype:	IgG
Characteristics:	Polyclonal Antibody
Purification:	Affinity purification

#### Target Details

Target:	ERGIC2
Alternative Name:	ERGIC2 ( <a href="#">ERGIC2 Products</a> )
Background:	ERGIC2 (ERGIC And Golgi 2) is a Protein Coding gene. Diseases associated with ERGIC2 include Acute Maxillary Sinusitis and Temtam Syndrome. An important paralog of this gene is ERGIC3.

## Target Details

Gene ID: 51290

UniProt: [Q96RQ1](#)

## Application Details

Application Notes: IHC 1:50-1:200

Restrictions: For Research Use only

## Handling

Format: Liquid

Concentration: 1 mg/mL

Buffer: PBS with 0.02 % sodium azide, 50 % glycerol, pH 7.3

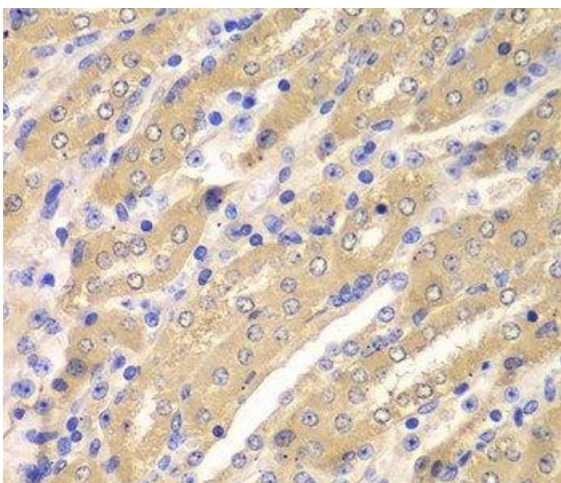
Preservative: Sodium azide

Precaution of Use: This product contains Sodium azide: a POISONOUS AND HAZARDOUS SUBSTANCE which should be handled by trained staff only.

Storage: -20 °C

Storage Comment: Store at -20°C. Avoid freeze / thaw cycles.

## Images



### Immunohistochemistry (Paraffin-embedded Sections)

**Image 1.** Immunohistochemistry of paraffin-embedded Mouse kidney using ERGIC2 Polyclonal Antibody at dilution of 1:100 (40x lens).