

Datasheet for ABIN7263435

anti-BBS2 antibody**1** Image[Go to Product page](#)

Overview

Quantity:	200 µL
Target:	BBS2
Reactivity:	Mouse, Rat
Host:	Rabbit
Clonality:	Polyclonal
Conjugate:	This BBS2 antibody is un-conjugated
Application:	Western Blotting (WB)

Product Details

Immunogen:	Recombinant fusion protein of human BBS2 (NP_114091.3).
Isotype:	IgG
Characteristics:	Polyclonal Antibody
Purification:	Affinity purification

Target Details

Target:	BBS2
Alternative Name:	BBS2 (BBS2 Products)
Background:	This gene is a member of the Bardet-Biedl syndrome (BBS) gene family. Bardet-Biedl syndrome is an autosomal recessive disorder characterized by severe pigmentary retinopathy, obesity, polydactyly, renal malformation and mental retardation. The proteins encoded by BBS gene family members are structurally diverse and the similar phenotypes exhibited by mutations in

Target Details

BBS gene family members is likely due to their shared roles in cilia formation and function. Many BBS proteins localize to the basal bodies, ciliary axonemes, and pericentriolar regions of cells. BBS proteins may also be involved in intracellular trafficking via microtubule-related transport. The protein encoded by this gene forms a multiprotein BBSome complex with seven other BBS proteins.

Molecular Weight: Observed_MW: 100 kDa
Calculated_MW: 79 kDa

Gene ID: 583

UniProt: [Q9BXC9](#)

Pathways: [Hedgehog Signaling](#)

Application Details

Application Notes: WB 1:500-1:2000

Restrictions: For Research Use only

Handling

Format: Liquid

Concentration: 1 mg/mL

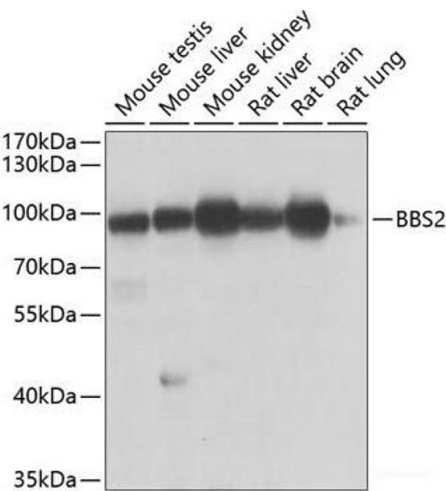
Buffer: PBS with 0.02 % sodium azide, 50 % glycerol, pH 7.3

Preservative: Sodium azide

Precaution of Use: This product contains Sodium azide: a POISONOUS AND HAZARDOUS SUBSTANCE which should be handled by trained staff only.

Storage: -20 °C

Storage Comment: Store at -20°C. Avoid freeze / thaw cycles.



Western Blotting

Image 1. Western blot analysis of extracts of various cell lines using BBS2 Polyclonal Antibody at dilution of 1:1000.