

Datasheet for ABIN7263461

**anti-RAB5B antibody**

## 2 Images

[Go to Product page](#)

## Overview

Quantity:	200 µL
Target:	RAB5B
Reactivity:	Human, Mouse, Rat
Host:	Rabbit
Clonality:	Polyclonal
Conjugate:	This RAB5B antibody is un-conjugated
Application:	Immunofluorescence (IF)

## Product Details

Immunogen:	Recombinant fusion protein of human RAB5B (NP_002859.1).
Isotype:	IgG
Characteristics:	Polyclonal Antibody
Purification:	Affinity purification

## Target Details

Target:	RAB5B
Alternative Name:	RAB5B ( <a href="#">RAB5B Products</a> )
Background:	RAB5B (RAB5B, Member RAS Oncogene Family) is a Protein Coding gene. Diseases associated with RAB5B include Parkinson Disease, Late-Onset. Among its related pathways are RAB GEFs exchange GTP for GDP on RABs and TBC/RABGAPs. Gene Ontology (GO) annotations related to this gene include GTP binding and GDP binding. An important paralog of this gene is RAB5C.

## Target Details

Gene ID: 5869

UniProt: [P61020](#)

## Application Details

Application Notes: IF 1:50-1:200

Restrictions: For Research Use only

## Handling

Format: Liquid

Concentration: 1 mg/mL

Buffer: PBS with 0.02 % sodium azide, 50 % glycerol, pH 7.3

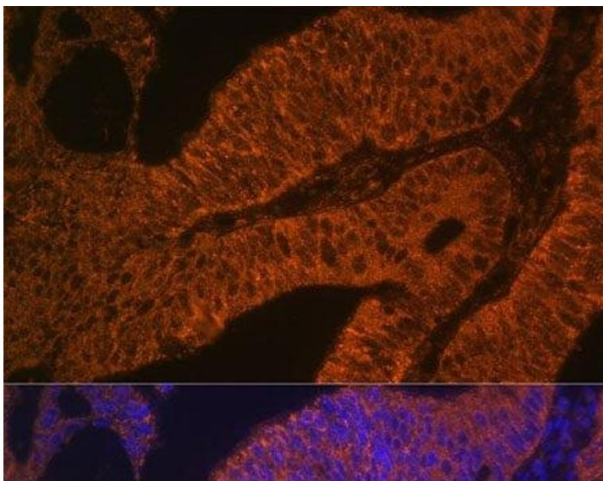
Preservative: Sodium azide

Precaution of Use: This product contains Sodium azide: a POISONOUS AND HAZARDOUS SUBSTANCE which should be handled by trained staff only.

Storage: -20 °C

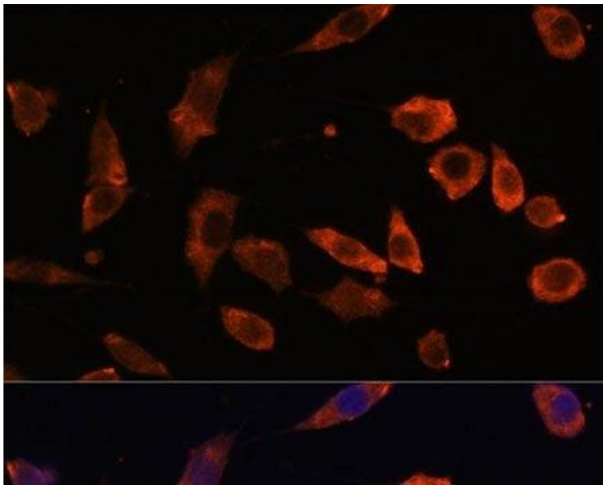
Storage Comment: Store at -20°C. Avoid freeze / thaw cycles.

## Images



### Immunofluorescence

**Image 1.** Immunofluorescence analysis of Human colon carcinoma using RAB5B Polyclonal Antibody at dilution of 1:100. Blue: DAPI for nuclear staining.



#### Immunofluorescence

**Image 2.** Immunofluorescence analysis of L929 cells using RAB5B Polyclonal Antibody at dilution of 1:100. Blue: DAPI for nuclear staining.